

WOLSELEY
INDUSTRIAL GROUP

**INDUSTRIAL
PLASTICS DIVISION**

HDPE FITTINGS DIMENSIONAL SPECS

TABLE OF CONTENTS

CLICK ON THE PAGE NUMBER TO JUMP TO THAT PAGE

➤ INFO SHEETS.....	P 3-5
➤ PIPE CHARTS.....	P 6-9
➤ FLANGE ADAPTERS.....	P 9-12
➤ FLANGES (HDPE BLINDS & DI BACK UP).....	P 13-18
➤ MJ ADAPTERS IPS/DIPS.....	P 19-21
➤ WALL ANCHOR/WATER STOP.....	P 22-23
➤ IPS/DIPS TRANSITION.....	P 24
➤ CAPS.....	P 25-26
➤ REDUCERS.....	P 27-32
➤ ELBOWS.....	P 33-53
➤ TEES.....	P 54-63
➤ CROSSES.....	P 64-66
➤ LATERALS.....	P 67-69

FITTING INFORMATION

Machined Fittings:

Machined fittings (i.e.: flange adapters, sub ends, MJ adapters, slip joint anchors, branch saddles) are normally fully pressure rated to SDR ordered unless otherwise specified.

Machined fittings are normally stocked in most SDR's listed and can be re-machined to a lesser wall thickness if needed.

Some fittings may require additional machining charges, please inquire for pricing information if re-machining is necessary.

Fabricated Fittings:

Fabricated mitered fittings (i.e.: elbows, line tees and line crosses with the exception of Wyes which are @ 63%) are generally rated at 80% of the pressure rating of the SDR of material that is used for the fitting (i.e.: a mitered fitting produced using SDR-11 200 psi material would be pressure rated for a working pressure of 160 psi).

Fully pressure rated mitered fabricated fittings will be constructed using the next size heavier SDR material available (i.e.: fittings rated for a SDR-11 200 psi working pressure rating would be manufactured using SDR-9 material).

Other fabricated fittings such as branch saddle tees and waterstops are normally pressure rated to the SDR ordered.

Molded Fittings:

Molded fittings are stocked in most SDR's listed and are normally fully pressure rated.

Customer:

Project Name:

Service: (Size, service, working pressure, etc)

Ferguson Industrial Plastics fittings are manufactured from pressure rated high density polyethylene pipe grade feedstock resin made to ASTM F714.

The resin properties are determined by the resin and pipe manufacturers, and can be any one of the following resins as specified by the customer. Items marked "X" are the subject of this submittal.

	ASTM D3350- Standard Specification for Polyethylene Plastic Pipe & Fittings Material
	Cell Classification 234373E (Yellow, Medium Density PE 2406/2407) Bi-modal
	Cell Classification 234373E (Yellow, Medium Density PE 2406/2407) Uni-modal
	Cell Classification 345464C (Black, High Density PE 3408/3608)
	Cell Classification 445576C (Black PE 4710 Bi-modal)
	Cell Classification 445574C (Black PE 4710 Uni-modal)

The dimensional characteristics and pressure capabilities of Ferguson Industrial Plastics molded and fabricated fittings are established in accordance with the following standards, and as specified by the customer. Additional dimensional data may accompany this submittal. Items marked "X" are the subject of this submittal.

	ASTM D2513-09 Standard Specification for Thermoplastic Gas Pressure Pipe, Tubing And Fittings
	ASTM F2206-02 Standard Specification for Fabricated Fittings of Butt-Fused Polyethylene (PE) Plastic Pipe, Fittings, Sheet Stock, Plate Stock, or Block Stock.
	ASTM D3261-03 Standard Specification for Butt Heat Fusion Polyethylene (PE) Plastic Fittings for Polyethylene (PE) Plastic Pipe and Tubing
	ASTM D2683-04 Standard Specification for Socket-Type Polyethylene Fittings for Outside Diameter-Controlled Polyethylene Pipe and Tubing
	AWWA C906-07 DIPS Polyethylene (PE) Pressure Pipe and Fittings, 2in through 63in For Water Distribution – Fittings specified to be AWWA approved meet this specification. Customer waives AWWA hydro-testing requirement over 24" unless specifically noted on purchase order.
	AWWA C906-07 IPS Polyethylene (PE) Pressure Pipe and Fittings, 2in through 63in For Water Distribution – Fittings specified to be AWWA approved meet this specification. Customer waives AWWA hydro-testing requirement over 24" unless specifically noted on purchase order.
	NSF-61 Drinking Water System Components – Health Effects
	Factory Mutual Class 200 Factory Mutual, Class number 1613, Polyethylene (PE) Pipe and Fittings for Underground Fire Protection
	Factory Mutual Class 150 Factory Mutual, Class number 1613, Polyethylene (PE) Pipe and Fittings for Underground Fire Protection
	Other

All fabrication procedures will be carried out according to the IP QA/QC manual including routine in-plant inspections, quality control, sampling, and long term testing which meets or exceeds the customer specifications or standards listed above. The IP QA/QC manual is available for customer inspection upon request.

Visit our website: www.HDPE.com

LIMITED WARRANTY

- 1. WARRANTY:** Subject to the limitations expressed herein, Seller warrants that products manufactured by Seller shall be free from defects in design, material and workmanship for a period of one (1) year from installation but in no case shall the warranty period extend longer than eighteen (18) months from the date of sale ("Warranty Period"). This warranty is void for any damage caused by (a) improper storage or installation (b) accident, damage, abuse or misuse, (c) abnormal or unusual operating conditions or applications (d) operating conditions or applications not made known to Seller prior to the date of the sale of the products (e) operating conditions or applications above the rated capacity of the product (f) a purpose or application in any way different from that for which the product was designed or (g) failure to comply with the terms of this warranty agreement.
- 2. REMEDIES.** Seller shall repair or replace, at its option and at no additional charge, any non-conforming or otherwise defective product, upon receipt of notice from Buyer during the Warranty Period of the alleged material defect. Seller makes NO ADDITIONAL ALLOWANCE FOR THE LABOR OR EXPENSE OF REPAIRING OR REPLACING DEFECTIVE PRODUCTS OR WORKMANSHIP OR DAMAGE RESULTING FROM SAME. SELLER HEREBY DISCLAIMS ALL OTHER EXPRESSED OR IMPLIED WARRANTIES, INCLUDING, WITHOUT LIMITATION, ALL IMPLIED WARRANTIES OF MERCHANTABILITY AND FITNESS OR FITNESS FOR A PARTICULAR PURPOSE.
- 3. BUYER RESPONSIBILITIES.** Every claim under this warranty shall be deemed waived unless Buyer submits to Seller a detailed description of the alleged defect and the manner in which Seller's workmanship is believed to be materially defective. Such description must be submitted in writing within sixty (60) days of the date Buyer knew or reasonably should have known of the alleged material defect and within the Warranty Period.
- 4. LIMITATION OF LIABILITY.** The warranty provided above is strictly limited to its terms and is in lieu of all other warranties expressed, implied and statutory. Buyer specifically understands and agrees that Seller shall not be liable in tort to Buyer, whether based on negligence, strict liability, or any other theory of tort liability for any action or failure to act in respect to the manufacture, preparation for sale, sale, delivery or use of Seller's products. Buyer expressly agrees that his sole and exclusive remedy for breach of the warranty set forth above shall be the remedies set forth above. BUYER FURTHER SPECIFICALLY UNDERSTANDS AND AGREES THAT, EXCEPT AS PROVIDED NO REMEDY SHALL BE AVAILABLE TO BUYER, INCLUDING, BUT NOT LIMITED TO, CLAIMS FOR INCIDENTAL, PUNITIVE, SPECIAL OR CONSEQUENTIAL DAMAGES OF ANY KIND. UNDER NO CIRCUMSTANCES WILL SELLER BE LIABLE FOR LOSS OF ANTICIPATED PROFITS OR ANY OTHER LOSS CAUSED BY REASON OF NONOPERATION OR INCREASED EXPENSE OF OPERATION CAUSED BY SELLER'S PRODUCTS. BUYER HEREBY ACKNOWLEDGES AND AGREES THAT UNDER NO CIRCUMSTANCES, AND IN NO EVENT, SHALL SELLER'S LIABILITY, IF ANY, EXCEED THE NET SALES PRICE OF THE DEFECTIVE PRODUCT(S) PURCHASED DURING THE PREVIOUS CONTRACT YEAR.
- 5. RECOMMENDATIONS BY SELLER.** Seller may assist Buyer in selection decisions by providing information regarding products that it manufactures and those manufactured by others. However, Buyer acknowledges that Buyer ultimately chooses the product's suitability for its particular use, as normally signified by the signature of Buyer's technical representative. Any recommendation made by Seller concerning the use, design, application or operation of the products shall not be construed as representations or warranties, expressed or implied. Failure by Seller to make recommendations or give advice to Buyer shall not impose any liability upon Seller.
- 6. EXCUSED PERFORMANCE.** Seller will make a good faith effort to complete delivery of the products as indicated by Seller in writing, but Seller assumes no responsibility or liability and will accept no backcharge or loss or damage due to delay or inability to deliver, caused by acts of God, war, labor difficulties, accidents, inability to obtain materials, delays of carriers, contractors or suppliers or any other causes of any kind whatever beyond the control of Seller. Under no circumstances shall Seller be liable for any special, consequential, incidental, or direct damages, losses, or expenses (whether or not based on negligence) arising directly or indirectly from delays or failure to give notice of delay.
- 7. CONTROLLING PROVISIONS.** All terms and conditions contained in any prior oral or written communication, including, without limitation, Buyer's purchase order, which are different from or in addition to the terms and conditions herein are hereby rejected and shall not be binding on Seller, whether or not they would materially alter this document, and Seller hereby objects thereto. Buyer agrees that all sales are subject to Seller's Terms and Conditions (Terms) which are available upon request or can be viewed on the web at www.ferguson.com/sales-terms.html. Buyer will be deemed to have assented to Terms if any part of the goods and/or services are delivered.

Iron Pipe Size (IPS) and Dimension Data

PE4710 (PE3408)

Pressure Ratings are calculated using 0.63 design factor for HDS at 73°F as listed in PPI TR-4 for PE 4710 materials. HDPE can accommodate up to 1.5 times the pipe pressure rating for a recurring surge and up to 2.0 times the pipe pressure rating for an occasional surge. Temperature, Chemical, and Environmental use considerations may require use of additional design factors.

PE 4710		DR 7 (333 psi)			DR 9 (250 psi)			DR 11 (200 psi)		
PIPE SIZE	AVE. O.D.	MIN. WALL	AVG. I.D.	WEIGHT LB/FT	MIN. WALL	AVG. I.D.	WEIGHT LB/FT	MIN. WALL	AVG. I.D.	WEIGHT LB/FT
1/2	0.840	0.120	0.586	0.120	0.093	0.643	0.100	0.076	0.679	0.080
3/4	1.050	0.150	0.732	0.190	0.117	0.802	0.150	0.095	0.849	0.120
1	1.315	0.188	0.916	0.290	0.146	1.005	0.230	0.120	1.061	0.200
1 1/4	1.660	0.237	1.158	0.460	0.184	1.270	0.370	0.151	1.340	0.310
1 1/2	1.900	0.271	1.325	0.610	0.211	1.453	0.490	0.173	1.533	0.410
2	2.375	0.339	1.656	0.950	0.264	1.815	0.770	0.216	1.917	0.640
3	3.500	0.500	2.440	2.060	0.389	2.675	1.660	0.318	2.826	1.390
4	4.500	0.643	3.137	3.400	0.500	3.440	2.750	0.409	3.633	2.300
5	5.563	0.795	3.878	5.200	0.618	4.253	4.200	0.506	4.490	3.520
6	6.625	0.946	4.619	7.360	0.736	5.065	5.960	0.602	5.349	4.990
7	7.125	0.976	5.056	8.520	0.792	5.446	6.890	0.648	5.751	5.780
8	8.625	1.232	6.013	12.480	0.958	6.594	10.090	0.784	6.963	8.460
10	10.750	1.536	7.494	19.400	1.194	8.219	15.680	0.977	8.679	13.140
12	12.750	1.821	8.889	27.280	1.417	9.746	22.070	1.159	10.293	18.490
14	14.000	2.000	9.760	32.900	1.556	10.107	26.610	1.273	11.301	22.300
16	16.000	2.286	11.154	42.970	1.778	12.231	34.750	1.455	12.915	29.120
18	18.000	2.571	12.549	54.370	2.000	13.760	43.970	1.636	14.532	36.840
20	20.000	2.857	13.943	67.130	2.222	15.289	54.280	1.818	16.146	45.490
22	22.000	3.143	15.337	81.230	2.444	16.819	65.680	2.000	17.760	55.050
24	24.000	3.429	16.732	96.670	2.667	18.346	78.180	2.182	19.374	65.520
26	26.000	—	—	—	2.889	19.875	91.750	2.364	20.988	76.900
28	28.000	—	—	—	3.111	21.405	106.400	2.545	22.605	89.150
30	30.000	—	—	—	3.333	22.934	122.130	2.727	24.219	102.350
32	32.000	—	—	—	3.556	24.462	139.12	2.909	25.833	116.460
34	34.000	—	—	—	3.778	25.991	157.05	3.091	27.447	131.480
36	36.000	—	—	—	4.000	27.520	176.07	3.273	29.061	147.410

* For data, sizes, or classes not reflected in these charts, please contact your local Wolseley Industrial or Ferguson Sales Associate

This size and dimension chart is intended for reference purposes. It should not be used in place of the advice from a licensed Professional Engineer. Pipe weights are calculated in accordance with PPI TR-7. Average inside diameter is calculated using IPS OD and Minimum wall plus 6% for use in estimating fluid flows. Actual ID will vary. When designing components to fit the pipe ID, refer to pipe dimension and tolerances in the applicable pipe manufacturing specifications.

Iron Pipe Size (IPS) and Dimension Data

PE4710 (PE3408)

Pressure Ratings are calculated using 0.63 design factor for HDS at 73°F as listed in PPI TR-4 for PE 4710 materials. HDPE can accommodate up to 1.5 times the pipe pressure rating for a recurring surge and up to 2.0 times the pipe pressure rating for an occasional surge. Temperature, Chemical, and Environmental use considerations may require use of additional design factors.

PE 4710		DR 13.5 (160 psi)			DR 17 (125 psi)		
PIPE SIZE	AVE. O.D.	MIN. WALL	AVG. I.D.	WEIGHT LB/FT	MIN. WALL	AVG. I.D.	WEIGHT LB/FT
1/2	0.84	—	—	—	—	—	—
3/4	1.05	0.078	0.885	0.100	—	—	—
1	1.315	0.097	1.109	0.160	—	—	—
1 1/4	1.66	0.123	1.399	0.260	—	—	—
1 1/2	1.9	0.141	1.601	0.340	—	—	—
2	2.375	0.176	2.002	0.530	0.140	2.078	0.430
3	3.5	0.259	2.951	1.160	0.206	3.063	0.940
4	4.5	0.333	3.794	1.910	0.265	3.938	1.550
5	5.563	0.412	4.690	2.920	0.327	4.870	2.360
6	6.625	0.491	5.584	4.150	0.390	5.798	3.350
7	7.125	0.528	6.006	4.800	0.419	6.237	3.880
8	8.625	0.639	7.270	7.030	0.507	7.550	5.680
10	10.75	0.796	9.062	10.920	0.632	9.410	8.820
12	12.75	0.944	10.749	15.360	0.750	11.160	12.410
14	14	1.037	11.802	18.520	0.824	12.253	14.980
16	16	1.185	13.488	24.190	0.941	14.005	19.550
18	18	1.333	15.174	30.610	1.059	15.755	24.750
20	20	1.481	16.860	37.790	1.176	17.507	30.530
22	22	1.630	18.544	45.750	1.294	19.257	36.860
24	24	1.778	20.231	54.440	1.412	21.007	43.990
26	26	1.926	21.917	63.890	1.529	22.759	51.610
28	28	2.074	23.603	74.090	1.647	24.508	59.870
30	30	2.222	25.289	85.040	1.765	26.258	68.740
32	32	2.370	26.976	96.760	1.882	28.010	78.180
34	34	2.519	28.660	109.260	2.000	29.760	88.280
36	36	2.667	30.346	122.490	2.118	31.510	98.980
42	42	3.111	35.404	166.700	2.471	36.761	134.720
48	48	3.556	40.462	217.760	2.824	42.013	175.970
54	54	—	—	—	3.177	47.265	222.670

* For data, sizes, or classes not reflected in these charts, please contact your local Wolseley Industrial or Ferguson Sales Associate

This size and dimension chart is intended for reference purposes. It should not be used in place of the advise from a licensed Professional Engineer. Pipe weights are calculated in accordance with PPI TR-7. Average inside diameter is calculated using IPS OD and Minimum wall plus 6% for use in estimating fluid lows. Actual ID will vary. When designing components to fit the pipe ID, refer to pipe dimension and tolerances in the applicable pipe manufacturing specifications.

Iron Pipe Size (IPS) and Dimension Data

PE4710 (PE3408)

Pressure Ratings are calculated using 0.63 design factor for HDS at 73°F as listed in PPI TR-4 for PE 4710 materials. HDPE can accommodate up to 1.5 times the pipe pressure rating for a recurring surge and up to 2.0 times the pipe pressure rating for an occasional surge. Temperature, Chemical, and Environmental use considerations may require use of additional design factors.

PE 4710		DR 21 (100 psi)			DR 26 (80 psi)			DR 32.5 (63 psi)		
PIPE SIZE	AVE. O.D.	MIN. WALL	AVG. I.D.	WEIGHT LB/FT	MIN. WALL	AVG. I.D.	WEIGHT LB/FT	MIN. WALL	AVG. I.D.	WEIGHT LB/FT
3	3.5	0.167	3.146	0.770	0.135	3.214	0.630	0.108	3.271	0.510
4	4.5	0.214	4.046	1.270	0.173	4.133	1.030	0.138	4.207	0.830
5	5.563	0.265	5.001	1.940	0.214	5.109	1.580	0.171	5.200	1.270
6	6.625	0.315	5.957	2.740	0.255	6.084	2.240	0.204	6.193	1.810
7	7.125	0.339	6.406	3.180	0.274	6.544	2.590	0.219	6.661	2.090
8	8.625	0.411	7.754	4.660	0.332	7.921	3.800	0.265	8.063	3.060
10	10.75	0.512	9.665	7.240	0.413	9.874	5.900	0.331	10.048	4.770
12	12.75	0.607	11.463	10.170	0.490	11.711	8.300	0.392	11.919	6.690
14	14	0.667	12.586	12.280	0.538	12.859	10.000	0.431	13.086	8.080
16	16	0.762	14.385	16.030	0.615	14.696	13.070	0.492	14.957	10.540
18	18	0.857	16.183	20.280	0.692	16.533	16.540	0.554	16.826	13.360
20	20	0.952	17.982	25.030	0.769	18.370	20.430	0.615	18.696	16.480
22	22	1.048	19.778	30.310	0.846	20.206	24.720	0.677	20.565	19.950
24	24	1.143	21.577	36.060	0.923	22.043	29.420	0.738	22.435	23.720
26	26	1.238	23.375	42.320	1.000	23.880	34.530	0.800	24.304	27.860
28	28	1.333	25.174	49.070	1.077	25.717	40.050	0.862	26.173	32.330
30	30	1.429	26.971	56.360	1.154	27.554	45.980	0.923	28.043	37.090
32	32	1.542	28.730	64.110	1.231	29.390	52.310	0.985	29.912	42.220
34	34	1.619	30.568	72.360	1.308	31.227	59.060	1.046	31.782	47.630
36	36	1.714	32.366	81.120	1.385	33.064	66.220	1.108	33.651	53.420
42	42	2.000	37.760	110.430	1.615	38.576	90.080	1.292	39.261	72.680
48	48	2.286	43.154	144.250	1.846	44.086	117.680	1.477	44.869	94.950
54	54	2.571	48.549	182.510	2.077	49.597	148.950	1.662	50.477	120.200
63	63	3.000	56.640	248.460	2.423	57.863	202.730	1.938	58.891	163.530

* For data, sizes, or classes not reflected in these charts, please contact your local Wolseley Industrial or Ferguson Sales Associate

This size and dimension chart is intended for reference purposes. It should not be used in place of the advise from a licensed Professional Engineer. Pipe weights are calculated in accordance with PPI TR-7. Average inside diameter is calculated using IPS OD and Minimum wall plus 6% for use in estimating fluid lows. Actual ID will vary. When designing components to fit the pipe ID, refer to pipe dimension and tolerances in the applicable pipe manufacturing specifications.

Ductile Iron Pipe Size (DIPS) and Dimension Data

PE4710 (PE3408)

Pressure Ratings are calculated using 0.63 design factor for HDS at 73°F as listed in PPI TR-4 for PE 4710 materials. HDPE can accommodate up to 1.5 times the pipe pressure rating for a recurring surge and up to 2.0 times the pipe pressure rating for an occasional surge. Temperature, Chemical, and Environmental use considerations may require use of additional design factors.

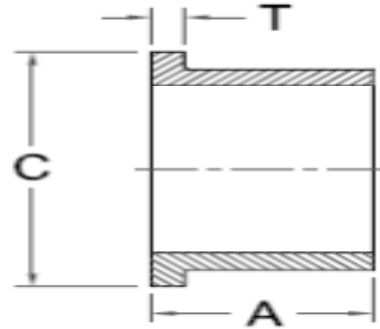
PE 4710		DR 7 (333 psi)			DR 9 (250 psi)			DR 11 (200 psi)		
PIPE SIZE	AVE. O.D.	MIN. WALL	AVG. I.D.	WEIGHT LB/FT	MIN. WALL	AVG. I.D.	WEIGHT LB/FT	MIN. WALL	AVG. I.D.	WEIGHT LB/FT
4	4.80	0.686	3.346	3.870	0.533	3.670	3.130	0.436	3.876	2.620
6	6.90	0.946	4.894	7.990	0.767	5.274	6.460	0.627	5.571	5.410
8	9.05	1.293	6.309	13.750	1.006	6.917	11.120	0.823	7.305	9.320
10	11.10	1.586	7.738	20.680	1.233	8.486	16.720	1.009	8.961	14.010
12	13.20	1.886	9.202	29.250	1.467	10.090	23.650	1.200	10.656	19.820
14	15.30	2.186	10.666	39.290	1.700	11.696	31.770	1.391	12.351	26.630
16	17.40	2.486	12.130	50.820	1.933	13.302	41.080	1.582	14.046	34.440
18	19.50	2.786	13.594	63.820	2.167	14.906	51.610	1.773	15.741	43.250
20	21.60	3.086	15.058	78.310	2.400	16.512	63.320	1.964	17.436	53.070
24	25.80	—	—	—	2.867	19.722	90.350	2.345	20.829	75.690
30	32.00	—	—	—	—	—	—	2.909	25.833	116.460
36	38.30	—	—	—	—	—	—	3.482	31.330	166.840

PE 4710		DR 13.5 (160 psi)			DR 17 (125 psi)			DR 19 (111 psi)		
PIPE SIZE	AVE. O.D.	MIN. WALL	AVG. I.D.	WEIGHT LB/FT	MIN. WALL	AVG. I.D.	WEIGHT LB/FT	MIN. WALL	AVG. I.D.	WEIGHT LB/FT
4	4.80	0.356	4.045	2.180	0.282	4.202	1.760	0.253	4.264	1.590
6	6.90	0.511	5.817	4.500	0.406	6.039	3.640	0.363	6.130	3.270
8	9.05	0.670	7.630	7.740	0.532	7.922	6.250	0.476	8.041	5.630
10	11.10	0.822	9.357	11.640	0.653	9.761	9.410	0.584	9.862	8.470
12	13.20	0.978	11.127	16.470	0.776	11.555	13.300	0.695	11.727	11.990
14	15.30	1.133	12.898	22.120	0.900	13.392	17.880	0.805	13.593	16.100
16	17.40	1.289	14.667	28.610	1.024	15.229	23.130	0.916	15.458	20.840
18	19.50	1.444	16.439	35.920	1.147	17.068	29.040	1.026	17.325	26.150
20	21.60	1.600	18.208	44.090	1.271	18.905	35.640	1.137	19.190	32.100
24	25.80	1.911	21.749	62.900	1.518	22.582	50.840	1.358	22.921	45.800
30	32.00	2.370	26.976	96.760	1.880	28.014	78.180	1.684	28.430	70.450
36	38.30	2.837	32.286	138.620	2.253	33.524	112.020	2.016	34.026	100.940
42	44.50	3.296	37.512	187.33	2.618	38.950	151.240	2.342	39.535	136.240
48	50.80	—	—	—	2.988	44.465	197.050	2.674	45.131	177.570

PE 4710		DR 21 (100 psi)			DR 26 (80 psi)			DR 32.5 (63 psi)		
PIPE SIZE	AVE. O.D.	MIN. WALL	AVG. I.D.	WEIGHT LB/FT	MIN. WALL	AVG. I.D.	WEIGHT LB/FT	MIN. WALL	AVG. I.D.	WEIGHT LB/FT
4	4.80	0.229	4.315	1.440	0.185	4.408	1.180	0.148	4.486	0.950
6	6.90	0.329	6.203	2.980	0.265	6.338	2.430	0.212	6.451	1.960
8	9.05	0.431	8.136	5.130	0.348	8.312	4.180	0.278	8.461	3.370
10	11.10	0.529	9.979	7.720	0.427	10.195	6.290	0.342	10.375	5.080
12	13.20	0.629	11.867	10.910	0.508	12.123	8.910	0.406	12.339	7.180
14	15.30	0.729	13.755	14.660	0.588	14.053	11.950	0.471	14.301	9.650
16	17.40	0.829	15.643	18.960	0.669	15.982	15.460	0.536	16.264	12.490
18	19.50	0.929	17.531	23.810	0.750	17.910	19.950	0.600	18.228	15.670
20	21.60	1.029	19.419	29.220	0.831	19.838	23.840	0.665	20.190	19.240
24	25.80	1.229	23.195	41.680	0.992	23.697	33.990	0.794	24.117	27.440
30	32.00	1.524	28.769	64.110	1.231	29.390	52.310	0.985	29.912	42.220
36	38.30	1.824	34.433	91.840	1.473	35.177	74.920	1.179	35.801	60.430
42	44.50	2.119	40.008	123.960	1.712	40.871	101.170	1.370	41.596	81.590
48	50.80	2.419	45.672	161.550	1.954	46.658	131.830	1.563	47.486	106.340

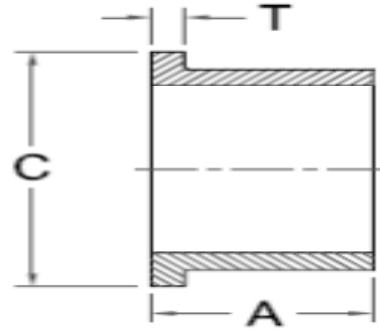
* For data, sizes, or classes not reflected in these charts, please contact your local Wolseley Industrial or Ferguson Sales Associate

This size and dimension chart is intended for reference purposes. It should not be used in place of the advice from a licensed Professional Engineer. Pipe weights are calculated in accordance with PPI TR-7. Average inside diameter is calculated using IPS OD and Minimum wall plus 6% for use in estimating fluid flows. Actual ID will vary. When designing components to fit the pipe ID, refer to pipe dimension and tolerances in the applicable pipe manufacturing specifications.



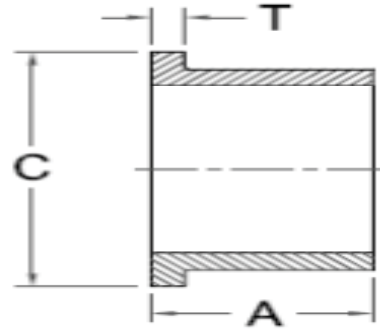
IPS FLANGE ADAPTER

<u>Nominal Size</u> <u>Actual OD</u>	<u>Pressure Class (psi)</u>	<u>SDR</u>	<u>Dimensions</u> <u>AxTxC(in)</u>	<u>Weight Per</u> <u>Item(lbs)</u>	<u>Part #</u>
3/4" 1.050"	200	DR 11	4.00 X 0.39 X 1.85	0.10	PEI11ABFF
	250	DR 9		0.10	PEI9ABFF
	335	DR 7		0.10	PEI7ABFF
1" 1.315"	200	DR 11	4.00 X 0.39 X 2.36	0.20	PEI11ABFG
	250	DR 9		0.20	PEI9ABFG
	335	DR 7		0.20	PEI7ABFG
1-1/4" 1.660"	200	DR 11	4.00 X 0.39 X 2.80	0.30	PEI11ABFH
	250	DR 9		0.30	PEI9ABFH
	335	DR 7		0.30	PEI7ABFH
1-1/2" 1.660"	200	DR 11	4.00 X .39 X 3.15	0.35	PEI11ABFJ
	250	DR 9		0.35	PEI9ABFJ
	335	DR 7		0.40	PEI7ABFJ
2" 2.375	200	DR 11	5.98 X 0.40 X 4.00	0.33	PEI11ABFK
	250	DR 9	5.98 X 0.45 X 4.00	0.40	PEI9ABFK
	335	DR 7	5.98 X 0.45 X 4.00	0.47	PEI7ABFK
*2-1/2" 2.875"	200	DR 11	6.00 X .60 X 5.00	0.75	PEI11ABFL
	250	DR 9		0.75	PEI9ABFL
	335	DR 7		0.80	
3" 3.50"	125	DR 17	5.98 X .598 X 5.00	0.83	PEI17ABFM
	200	DR 11		0.83	PEI11ABFM
	250	DR 9	5.98 X .625 X 5.00	1.20	PEI9ABFM
	335	DR 7		1.25	PEI7ABFM
4" 4.50"	125	DR 17	6.00 X .80 X 6.60	1.70	PEI17ABFP
	200	DR 11		1.70	PEI11ABFP
	250	DR 9	6.00 X 1.00 X 6.00	2.10	PEI9ABFP
	335	DR 7		2.30	PEI7ABFP
5" 5.563"	125	DR 17	8.00 X .64 X 7.50	2.50	
	200	DR 11		2.50	PEI11ABFS
	250	DR 9	8.00 X .98 X 7.50	2.50	
6" 6.625	125	DR 17	7.99 X .80 X 8.50	5	PEI17ABFU
	200	DR 11		6	PEI11ABFU
	250	DR 9	8.00 X 1.00 X 8.50	7	PEI9ABFU
	335	DR 7	8.00 X 1.20 X 8.50	7	PEI7ABFU



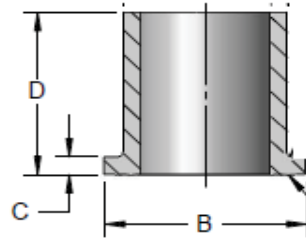
IPS FLANGE ADAPTER

<u>Nominal Size</u> <u>Actual OD</u>	<u>Pressure Class (psi)</u>	<u>SDR</u>	<u>Dimensions</u> <u>AxTxC(in)</u>	<u>Weight Per Item(lbs)</u>	<u>Part #</u>
8" 8.625	125	Dr 17	9.02 X 1.00 X 10.660	6	PEI17ABFX
	200	DR 11		6	PEI11ABFX
	250	DR 9	9.02 X 1.625 X 10.60	7	PEI9ABFX
	335	DR 7	9.02 X 1.625 X 10.60	11	PEI7ABFX
10" 10.75	125	DR 17	11.00 X 1.28 X 12.80	10	PEI17ABF10
	200	DR 11	11.00 X 1.29 X 12.80	10	PEI11ABF10
	250	DR 9	11.00 X 1.50 X 12.80	17	PEI9ABF10
	335	DR 7	11.00 X 2.00 X 12.80	25	PEI7ABF10
12" 12.75"	125	DR 17	11.00 X 1.54 X 15.25	18	PEI17ABF12
	200	DR 11	11.00 X 1.54 X 15.25	18	PEI11ABF12
	250	DR 9	11.00 X 1.87 X 15.25	26	PEI9ABF12
	335	DR 7	11.00 X 2.30 X 15.25	29	PEI7ABF12
14" 14.00"	125	DR 17	11.00 X 1.63 X 17.50	28	PEI17ABF14
	200	DR 11	11.00 X 1.70 X 17.50	28	PEI11ABF14
	250	DR 9	11.00 X 2.00 X 17.50	28	PEI9ABF14
	335	DR 7	11.00 X 2.60 X 17.50	41	PEI7ABF14
16" 16.00"	125	DR 17	12.00 X 1.88 X 20.00	37	PEI17ABF16
	200	DR 11	12.00 X 1.90 X 20.00	37	PEI11ABF16
	250	DR 9	12.00 X 2.25 X 20.00	37	PEI9ABF16
	335	DR 7	12.00 X 3.00 X 20.00	53	PEI7ABF16
18" 18.00"	125	DR 17	12.00 X 2.00 X 21.10	44	PEI17ABF18
	200	DR 11	12.00 X 2.10 X 21.10	44	PEI11ABF18
	250	DR 9	12.00 X 2.50 X 21.10	44	PEI9ABF18
	335	DR 7	12.00 X 3.86 X 21.10	64	
20" 20.00"	125	DR 17	12.00 X 2.27 X 23.50	56	PEI17ABF20
	200	DR 11	12.00 X 2.30 X 23.50	56	PEI11ABF20
	250	DR 9	12.00 X 3.49 X 23.50	56	PEI9ABF20
	335	DR 7	12.00 X 3.63 X 23.50	62	PEI7ABF20
22" 22.00"	125	DR 17	12.00 X 2.50 X 25.60	68	PEI17ABF22
	200	DR 11	12.00 X 2.50 X 25.60	68	PEI11ABF22
	250	DR 9	12.00 X 3.92 X 25.60	68	PEI9ABF22



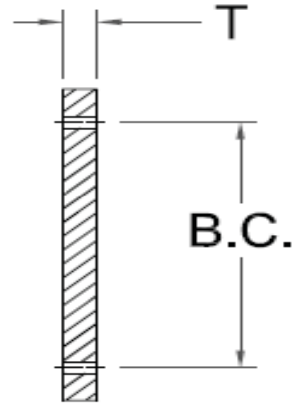
IPS FLANGE ADAPTER

<u>Nominal Size</u> <u>Actual OD</u>	<u>Pressure Class (psi)</u>	<u>SDR</u>	<u>Dimensions</u> <u>AxTxC(in)</u>	<u>Weight Per</u> <u>Item(lbs)</u>	<u>Part #</u>
24" 24.00"	125	DR 17	14.00 X 2.75 X 27.90	83	PEI17ABF24
	200	DR 11	14.00 X 2.90 X 27.90	83	PEI11ABF24
	250	DR 9	14.00 X 4.36 X 27.90	83	PEI9ABF24
26" 26.00"	125	DR 17	14.00 X 2.96 X 27.75	87	PEI17ABF26
	200	DR 11	14.00 X 2.96 X 27.75	117	PEI11ABF26
28" 28.00"	125	DR 17	14.00 X 3.18 X 32.00	90	
	200	DR 11	14.00 X 3.18 X 32.00	129	PEI11ABF28
30" 30.00"	125	DR 17	14.00 X 3.41 X 34.00	98	PEI17HBF30
	200	DR 11	14.00 X 3.41 X 34.00	134	PEI11ABF30
32" 32.00"	65	DR 32.5	14.00 X 3.64 X 36.125	95	PEI32ABF32
	125	DR 17		106	PEI17HBF32
34" 34.00"	65	DR 32.5	14.00 X 2.24 X 38.125	120	PEI32ABF34
	125	DR 17	14.00 X 3.86 X 38.125	135	PEI17ABF34
36" 36.00"	65	DR 32.5	14.00 X 2.37 X 38.125	130	PEI32HBF36
	125	DR 17	14.00 X 4.09 X 38.125	141	PEI17HBF36
42" 42.00"	65-100	DR32.5-21	CALL	152	PEI26HBF42 PEI32HBF42
48" 48.00"	65	DR 32.5	CALL	150	
	80	DR 26		170	PEI26ABF48
54" 54.00"	65	DR 32.5	CALL	230	PEI26ABF54
	80	DR 26	CALL		PEI32ABF54



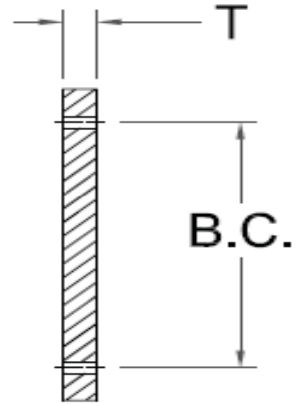
DIPS FLANGE ADAPTER

<u>Nominal Size</u> <u>Actual OD</u>	<u>Dr/Pressure</u> <u>Class (psi)</u>	<u>Dimensions</u> <u>BxD(in)</u>	<u>Dimension</u> <u>C (in)</u>	<u>Weight per</u> <u>Package(lbs)</u>	<u>Part #</u>
4" 4.80"	200	6.56 X 6.0	0.68	2.4	PED11ABFP
6" 6.900"	200	8.60 X 8.0	1.080	4.52	PED11ABFU
	250				PED9ABFU
8" 9.050"	200	10.72 X 9.0	1.38	9	PED11ABFX
	250				PED9ABFX
10" 11.100"	200	13.17 X 9.0	1.88	15.44	PED11ABF10
	250				PED9ABF10
12" 13.200"	200	15.97 X 11.0	2.13	24	PED11ABF12
	250				PED9ABF12
14" 15.300"	200	17.40 X 12.0	2.25	28	PED11ABF14
	250	17.13 X 12.0	2.46		PED9ABF14
16" 17.400"	200	19.90 X 11.50	2.88	37.0	PED11ABF16
	250				
18" 19.500"	200	21 X 12	2.0	44.0	PED11ABF18
	250				PED9ABF18
20" 21.600"	200	23.66 X 11.50	3.630	56	PED11ABF20
	250				PED9ABF20
24" 25.80"	200	27.90 X 11.50	4.13	83	PED11ABF24
	250				
30" 32.000"	200	34.13 X 14.0	3.26	114	PED11ABF30



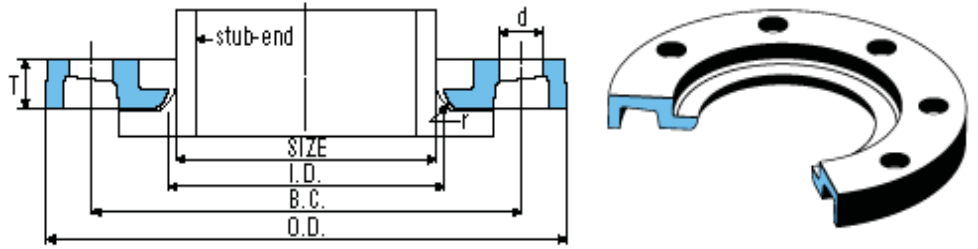
IPS HDPE BLIND FLANGE

<u>Nominal size</u>	<u>Pressure Class(psi)</u>	<u>Dimensions B.C. xT (in)</u>	<u>Weight per Item(lbs)</u>	<u>Bolt Diameter</u>	<u>Part #</u>	<u>Part #</u>
2" 2.375"	Non Pressure	4-3/4 x 1	2	0.625	4	PEIHBBFKF
3" 3.500"	Non Pressure	6 x 1	2	0.625	4	PEIHBBFMF
4" 4.500"	Non Pressure	7-1/2 x 1	3	0.625	8	PEIHBBFPF
6" 6.625"	Non Pressure	9-1/2 x 1	4	0.75	8	PEIHBBFUF
8" 8.625"	Non Pressure	11-3/4 x 1	6	0.75	8	PEIHBBFXF
10" 10.750"	Non Pressure	14-1/4 x 1	9	0.875	12	PEIHBBF10F
12" 12.750"	Non Pressure	17 x 1	13	0.875	12	PEIHBBF12F
14" 14.00"	Non Pressure	18-3/4 x 1	15	1	12	PEIHBBF14F
16" 16.00"	Non Pressure	21-1/4 x 1	19	1	16	PEIHBBF16F
18" 18.00"	Non Pressure	22-3/4 x 1	22	1.125	16	PEIHBBF18F
20" 20.000"	Non Pressure	25 x 1	20	1.125	20	PEIHBBF20F
22" 22.000"	Non Pressure	27-1/4 x 1	30	1.25	20	
24" 24.000"	Non Pressure	29-1/2 x 1	36	1.25	20	PEIHBBF24F
26" 26.000"	Non Pressure	31-3/4 x 1	61	1.25	24	PEIHBBF26F
28" 28.000"	Non Pressure	34 x 1-1/2	69	1.25	28	PEIHBBF28F
30" 30.000"	Non Pressure	36 x 1-1/2	78	1.25	28	PEIHBBF30F



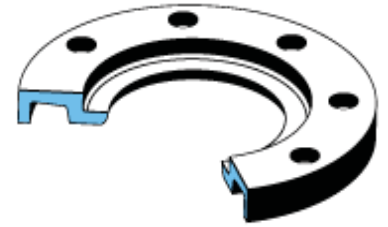
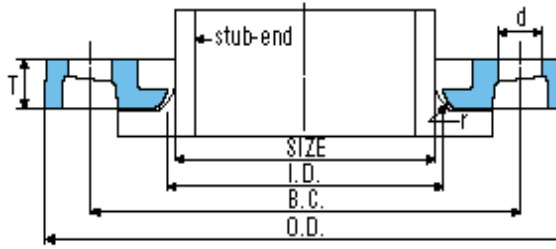
IPS HDPE BLIND FLANGE

<u>Nominal size</u>	<u>Pressure Class(psi)</u>	<u>Dimensions B.C. xT (in)</u>	<u>Weight per Item(lbs)</u>	<u>Bolt Diameter</u>	<u>Part #</u>	<u>Part #</u>
32" 32.000"	Non Pressure	38-1/2 x 1-1/2	91	1.5	28	PEIHBBF32F
34" 34.000"	Non Pressure	40-1/2 x 1-1/2	99	1.5	32	
36" 36.000"	Non Pressure	42-3/4 x 1-1/2	110	1.5	32	PEIHBBF36F
42" 42.000"	Non Pressure	49-1/2 x 2	147	1.5	36	PEIHBBF42F
48" 48.000"	Non Pressure	56 x 2	244	1.5	44	PEIHBBF48F
54" 54.000"	Non Pressure	62-3/4 x 2	303	1.75	44	



Convoluted DI Back Up Flanges
CFP = CALL FOR PRICE

Pipe Diameter	Outside	Flange	Inside	Bolt	Dia.	Bolt	Radius	Weight	Operating	PART #
	Dia.	Thickness	Dia.	Count	Bolt Hole	Circle	r	lbs/pc	Pressure	
	O.D.	T	I.D.	N	B.D.	B.C.				
1/2"	3.5	0.5	0.9	4	0.63	2.38	0.13	1	335	
3/4"	3.88	0.5	1.11	4	0.63	2.75	0.13	1	335	IBUPSDR70075C
1"	4.25	0.56	1.38	4	0.63	3.13	0.13	1	335	IBUPSDR701C
1-1/4"	4.63	0.63	1.72	4	0.63	3.5	0.19	2	335	IBUPSDR70125C
1-1/2"	5	0.69	1.97	4	0.63	3.88	0.25	2	335	IBUPSDR70150C
2"	6	0.75	2.46	4	0.75	4.75	0.31	3	335	IBUPSDR702C
2"	6	0.5	2.63	4	0.75	4.75	0.2	1.5	200	IBUPSDR1102B
2-1/2"	7	0.88	2.97	4	0.75	5.5	0.31	4	335	IBUPSDR70250C
3"	7.5	0.94	3.6	4	0.75	6	0.4	4	335	IBUPSDR703C
3"	7.5	0.53	3.75	4	0.75	6	0.28	2.5	200	IBUPSDR1103B
4"	9	0.94	4.6	8	0.75	7.5	0.4	5.5	335	IBUPSDR704C
4"	9	0.55	4.75	8	0.75	7.5	0.28	3.5	200	IBUPSDR1104B
5"	10	0.94	5.69	8	0.88	8.5	0.44	6	335	IBUPSDR705C
6"	11	1	6.75	8	0.88	9.5	0.4	7	335	IBUPSDR706C
6"	11	0.63	6.88	8	0.88	9.5	0.28	4.5	200	IBUPSDR1106B
8"	13.5	1.12	8.75	8	0.88	11.75	0.4	11	335	IBUPSDR708C
8"	13.5	0.85	8.88	8	0.88	11.75	0.28	8	200	IBUPSDR1108B
10"	16	1.19	10.92	12	1	14.25	0.4	16	335	IBUPSDR710C
10"	16	0.98	11	12	1	14.25	0.31	12	200	IBUPSDR1110B

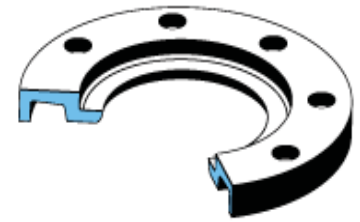
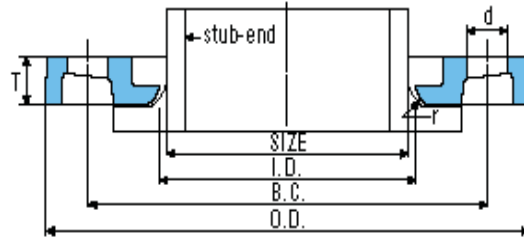


Convoluted DI Back Up Flanges
CFP = CALL FOR PRICE

Pipe Diameter	Outside	Flange	Inside	Bolt	Dia.	Bolt	Radius	Weight	Operating	PART #
	Dia.	Thickness	Dia.	Count	Bolt Hole	Circle	r	lbs/pc	Pressure	
	O.D.	T	I.D.	N	B.D.	B.C.				
12"	19	1.5	12.92	12	1	17	0.4	23	335	IBUPSDR712C
12"	19	1.25	13.13	12	1	17	0.28	20	200	IBUPSDR1112B
14"	21	1.63	14.18	12	1.13	18.75	0.4	37	335	IBUPSDR714C
14"	21	1.38	14.38	12	1.13	18.75	0.31	30	200	IBUPSDR1114B
16"	23.5	1.88	16.19	16	1.13	21.25	0.4	49	335	IBUPSDR716C
16"	23.5	1.65	16.38	16	1.13	21.25	0.35	40	200	IBUPSDR1116B
18"	25	1.8	18.2	16	1.25	22.75	0.4	48	335	
18"	25	1.75	18.2	16	1.25	22.75	0.4	48	335	
18"	25	1.67	18.38	16	1.25	22.75	0.35	45	200	IBUPSDR1118B
20"	27.5	2.06	20.38	20	1.25	25	0.31	61	200	
20"	27.5	1.81	20.38	20	1.25	25	0.4	55	160	IBUPSDR1120B
22"	29.5	2.13	22.38	20	1.38	27.25	0.31	72	200	
22"	29.5	2	22.38	20	1.38	27.25	0.37	65	160	IBUPSDR1122B
24"	32	2.13	24.38	20	1.38	29.5	0.31	91	200	
24"	32	2.17	24.38	20	1.38	29.5	0.4	80	160	IBUPSDR1124B
30"	38.75	2.5	30.38	28	1.38	36	0.31	143	128	IBUPSDR13530B
36"	46	2.06	36.38	32	1.63	42.75	0.5	129	50	IBUPSDR32536B

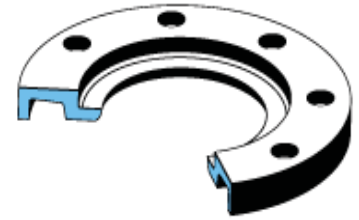
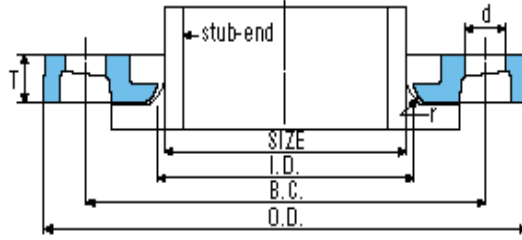
1. Operating pressure on an HDPE flange adapter with a safety factor of 2.

SS316 DI Back Up Flanges
CFP = CALL FOR PRICE



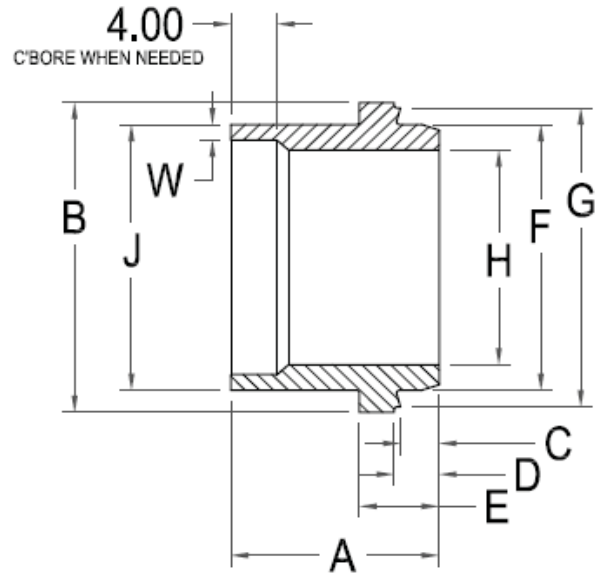
Pipe Diameter	Outside	Flange	Inside	Bolt	Dia.	Bolt	Radius	Weight	Operating	PART #
	Dia. O.D.	Thickness T	Dia. I.D.	Count N	Bolt Hole B.D.	Circle B.C.	r	lbs/pc	Pressure	
1"	4.250	0.560	1.380	4	0.630	3.130	0.125	1.1	335	ISS316SDR701
1-1/2"	5.000	0.690	1.970	4	0.630	3.880	0.200	1.7	335	
2"	6.000	0.750	2.460	4	0.750	4.750	0.270	2.6	335	ISS316SDR702
2"	6.000	0.400	2.460	4	0.750	4.750	0.270	1.7	200	ISS316SDR1102
3"	7.500	0.940	3.600	4	0.750	6.000	0.330	4.5	335	ISS316SDR703
3"	7.500	0.400	3.600	4	0.750	6.000	0.330	2.5	160	ISS316SDR13503
4"	9.000	0.940	4.600	8	0.750	7.500	0.390	5.8	335	ISS316SDR704
4"	9.000	0.500	4.600	8	0.750	7.500	0.390	3.6	160	ISS316SDR13504
6"	11.000	1.000	6.750	8	0.880	9.500	0.440	8.4	335	ISS316SDR706
6"	11.000	0.600	6.750	8	0.880	9.500	0.440	5.6	160	ISS316SDR13506
8"	13.500	1.120	8.750	8	0.880	11.750	0.440	12.0	335	ISS316SDR708
8"	13.500	0.700	8.750	8	0.880	11.750	0.440	8.2	160	ISS316SDR13508
10"	16.000	1.340	10.920	12	1.000	14.250	0.430	20.0	335	ISS316SDR710
10"	16.000	0.900	10.920	12	1.000	14.250	0.420	11.1	160	ISS316SDR13510
12"	19.000	1.770	12.920	12	1.000	17.000	0.500	35.3	335	ISS316SDR712
12"	19.000	1.250	12.920	12	1.000	17.000	0.420	24.0	200	ISS316SDR1112
14"	21.000	1.890	14.180	12	1.130	18.750	0.430	44.9	335	
14"	21.000	1.610	14.180	12	1.130	18.750	0.430	40.1	200	ISS316SDR1114
14"	21.000	1.130	14.180	12	1.130	18.750	0.410	24.4	125	ISS316SDR1714

SS316 DI Back Up Flanges
CFP = CALL FOR PRICE



Pipe Diameter	Outside	Flange	Inside	Bolt	Dia.	Bolt	Radius	Weight	Operating	PART #
	Dia. O.D.	Thickness T	Dia. I.D.	Count N	Bolt Hole B.D.	Circle B.C.	r	lbs/pc	Pressure	
16"	23.500	1.970	16.190	16	1.130	21.250	0.400	60.6	335	ISS316SDR716
16"	23.500	1.890	16.190	16	1.130	21.250	0.430	54.2	200	ISS316SDR1116
16"	23.500	1.440	16.190	16	1.130	21.250	0.500	52.0	125	ISS316SDR1716
18"	25.000	2.170	18.200	16	1.250	22.750	0.430	67.0	335	
18"	25.000	1.560	18.200	16	1.250	22.750	0.500	59.5	200	ISS316SDR1118
18"	25.000	1.340	18.200	16	1.250	22.750	0.400	33.0	100	
20"	27.500	2.320	20.250	20	1.250	25.000	0.430	90.0	335	ISS316SDR720
20"	27.500	2.150	20.250	20	1.250	25.000	0.430	76.0	200	
20"	27.500	1.470	20.250	20	1.250	25.000	0.375	39.0	100	ISS316SDR2120
22"	29.500	2.480	22.250	20	1.380	27.250	0.430	106.0	335	
22"	29.500	2.250	22.250	20	1.380	27.250	0.430	88.0	200	
22"	29.500	1.540	22.250	20	1.380	27.250	0.375	50.0	100	ISS316SDR2122
24"	31.730	2.720	24.250	20	1.375	29.500	0.430	126.3	335	ISS316SDR724
24"	32.000	2.500	24.250	20	1.375	29.500	0.430	107.8	200	ISS316SDR1124
24"	32.000	1.600	24.250	20	1.375	29.500	0.380	84.2	80	ISS316SDR2624

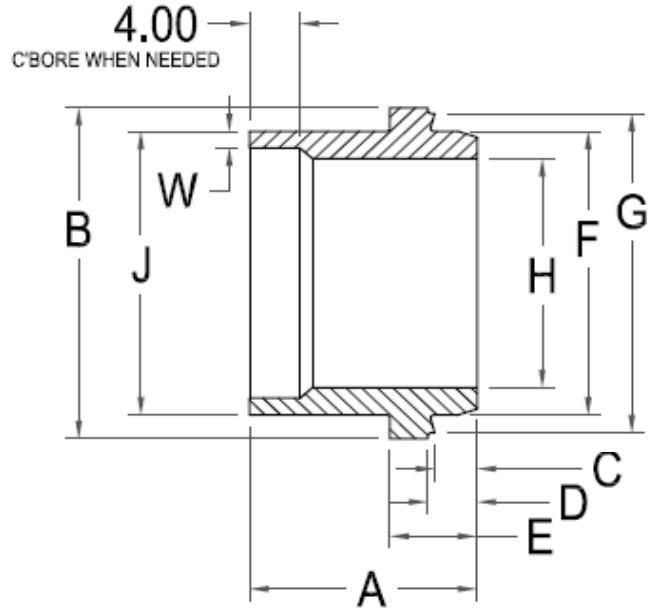
1. Operating pressure on an HDPE flange adapter with a safety factor of 2.



IPS FAB MJ ADAPTER
****Less Accy Kit****

<u>Nominal Size</u> Actual OD	<u>Pressure Class</u> (psi)	<u>Feed Stock</u>	<u>Dimension A (in)</u>	<u>Dimension J (in)</u>	<u>Bolt Length</u>	<u>Number of Bolts</u>	<u>Part # w/Stiffener</u>	<u>Part # w/o Stiffener</u>
3" 3.5000"	200	DR 11	9.00	3.50	5	4	PEI11HMJSSM	PEI11HMJM
4" 4.5000"	200	DR 11	10.25	4.50	4.50	4	PEI11HMJSSP	PEI11HMJP
6" 6.625"	200	DR 11	11.31	6.62	5	4	PEI11HMJSSU	PEI11HMJU
8" 8.625"	200	DR 11	11.94	8.62	5	6	PEI11HMJSSX	PEI11HMJX
10" 10.750"	200	DR 11	13.56	10.75	6	8	PEI11HMJSS10	PEI11HMJ10
12" 12.750"	200	DR 11	13.00	12.75	6	8	PEI11HMJSS12	PEI11HMJ12

SEE IPS/DIPS ACCY KIT PRICE SHEET



DIPS FAB MJ ADAPTER

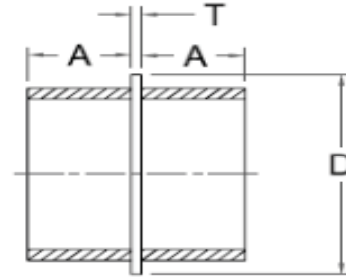
****Less Accy Kit****

<u>Nominal Size</u> <u>Actual OD</u>	<u>Pressure</u> <u>Class (psi)</u>	<u>Feed</u> <u>Stock</u>	<u>Dimension</u> <u>A (in)</u>	<u>Dimension J</u> <u>(in)</u>	<u>Bolt</u> <u>Length</u>	<u>Number</u> <u>of Bolts</u>	<u>Part #</u> <u>w/Stiffener</u>	<u>Part #</u> <u>w/o Stiffener</u>
4" 4.800"	200	DR 11	10.25	4.80	4 1/2	4	PED11HMJSSP	PED11HMJJP
	250	DR 9						
6" 6.900"	200	DR 11	11.31	6.90	5	4	PED11HMJSSU	PED11HMJU
	250	DR 9						
8" 9.050"	200	DR 11	14.00	9.05	5	6	PED11HMJSSX	PED11HMJX
	250	DR 9						
10" 11.100"	200	DR 11	13.56	11.10	6	8	PED11HMJSS10	PED11HMJ10
	250	DR 9						
12" 13.200"	200	DR 11	13.00	13.20	6	8	PED11HMJSS12	PED11HMJ12
	250	DR 9						
14" 15.30"	200	DR 11	13.00	15.30	7	10		PED11HMJ14
	250	DR 9						
16" 17.400"	200	DR 11	13.00	17.40	7	12		PED11HMJ16
	250	DR 9						
18" 19.500"	200	DR 11	13.00	19.50	7	12		PED11HMJ18
	250	DR 9						
20" 21.600"	200	DR 11	16.00	21.60	7	14		PED11HMJ20
	250	DR 9						
24" 25.800"	200	DR 11	18.00	25.80	7	14		PED11HMJ24
	250	DR 9						

MJ ONLY SEE SEPARATE SHEET FOR ACCY KIT

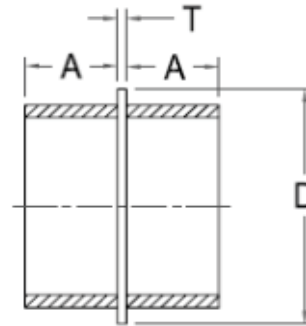
IPS/DIPS MJ ACCESSORY KIT INCLUDES GLAND

<u>Size</u>	<u>Bolt</u>	<u>Number of Bolts</u>	<u>Part #</u>
3"	5/8" X 5"	4	C6975069
4"	3/4" X 4-1/2"	4	C6975026
6"	3/4" X 5"	6	C6975027
8"	3/4" X 5"	6	C10011687
10"	3/4" X 6"	8	C6975029
12"	3/4" X 6"	8	C6975030
14"	3/4" X 7"	10	IMJAPHD14
16"	3/4" X 7"	12	IMJAPHD16
18"	3/4" X 7"	12	IMJAPHD18
20"	3/4" X 7"	14	IMJAPHD20
24"	3/4" X 7"	16	IMJAPHD24



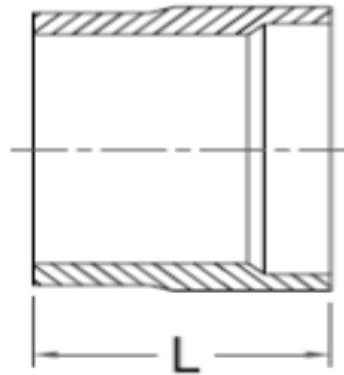
IPS FAB WALL ANCHOR/WATER STOP

Nominal Size	Pressure class (psi)	STYLE	Dimensions A x T x D (in)	Weight per Item (lbs)	Part #
2"	200	1	5-1/2 x 5/8 x 3-1/2	1	PEI11HBWAWSKF
	250				PEI9HBWAWSKF
3"	200	1	5-1/2 x 5/16 x 4-1/2	2	PEI11HBWAWSMF
	250				
4"	200	1	5-1/2 x 1-1/4 x 6-1/4	4	PEI11HBWAWSPF
	250				PEI9HBWAWSPF
6"	200	1	7 x 1-15/16 x 8-3/8	8	PEI11HBWAWSUF
	250			12	PEI9HBWAWSUF
8"	200	1	7 x 2-1/2 x 10-1/2	12	PEI11HBWAW SXF
	250			22	PEI9HBWAW SXF
10"	200	1	7 x 2-1/2 x 12-3/4	20	PEI11HBWAWS10F
	250			34	PEI9HBWAWS10F
12"	200	1	7 x 2-1/2 x 15-1/4	36	PEI11HBWAWS12F
	250			52	PEI9HBWAWS12F
14"	200	1	10 x 2-1/2 x 17-1/4	56	PEI11HBWAWS14F
	250			80	PEI9HBWAWS14F
16"	200	1	10 x 3-3/8 x 19-3/4	74	PEI11HBWAWS16F
	250			106	PEI9HBWAWS16F
18"	200	1	10 x 3-3/8 x 20-1/2	88	PEI11HBWAWS18F
	250	2		110	PEI9HBWAWS18F
20"	200	1	10 x 3-3/8 x 23-3/8	112	PEI11HBWAWS20F
	250	2		140	PEI9HBWAWS20F
22"	200	1	10 x 3-3/8 x 25-1/2	136	PEI11HBWAWS22F
	250	2		170	
24"	200	1	10 x 3-3/8 x 27-3/4	168	PEI11HBWAWS24F
	250	2		204	PEI9HBWAWS24F
26"	200	2	11-1/2 x 3-1/2 x 30	242	PEI11HBWAWS26F
	250				PEI9HBWAWS26F
28"	200	2	11-1/2 x 3-1/2 x 32-1/4	304	PEI11HBWAWS28F
	250				
30"	200	2	11-1/2 x 3-1/2 x 34-1/4	368	PEI11HBWAWS30F
	250				
32"	125	2	11-1/2 x 3-1/2 x 36-1/2	377	PEI17HBWAWS32F
	200				
34"	125	2	11-1/2 x 4 x 38-1/2	442	PEI11HBWAWS34F
	200				
36"	125	2	11-1/2 x 4 x 40-3/4	523	PEI17HBWAWS36F
	200				PEI11HBWAWS36F
42"	100	2	18 x 4 x 47-1/2	505	PEI17HBWAWS42F
	125				
48"	100	2	18 x 4 x 53-7/8	672	PEI17HBWAWS48F
	125				
54"	100	2	18 x 4 x 60	955	PEI17HBWAWS54F
	125				



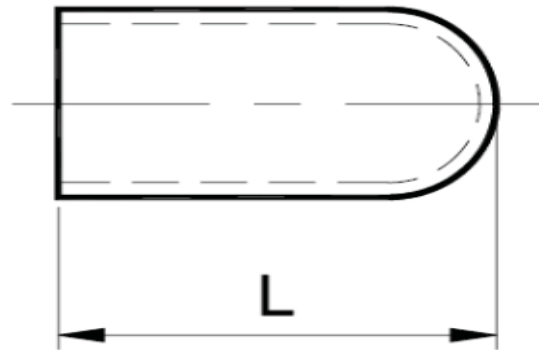
DIPS FAB WALL ANCHOR/WATER STOP

<u>Nominal Size</u> <u>Actual OD</u>	<u>Pressure</u> <u>class (psi)</u>	<u>Style</u>	<u>Dimension</u> <u>A x T x D (in)</u>	<u>Weight per</u> <u>Item (lbs)</u>	<u>Part #</u>
4" 4.80"	200	1	7 x 1-1/4 x 6-1/4	4	PED11HBWAWSPF
	250	2			
6" 6.90"	200	1	7 x 1-15/16 x 8-3/8	8	PED11HBWAWSUF
	250	2			PED9HBWAWSUF
8" 9.05"	200	1	7 x 2-1/2 x 10-7/8	12	PED11HBWAWSXF
	250	2			PED9HBWAWSXF
10" 11.10"	200	1	7 x 2-1/2 x 13-3/16	20	PED11HBWAWS10F
	250	2			
12" 13.20"	200	1	7 x 2-1/2 x 15-5/16	36	PED11HBWAWS12F
	250	2			PED9HBWAWS12F
14" 15.30"	200	1	10 x 2-1/2 x 17-3/8	54	PED11HBWAWS14F
	250	2			
16" 17.40"	200	1	10 x 23-3/8 x 19-1/2	72	PED11HBWAWS16F
	250	2			
18" 19.50"	200	1	10 x 3-3/8 x 21-5/8	88	PED11HBWAWS18F
	250	2			
20" 21.60"	200	1	10 x 3-3/8 25-13/16	106	
	250	2			PED9HBWAWS20F
24" 25.80"	200	1	10 x 3-3/8 x 31	160	
	250	2			



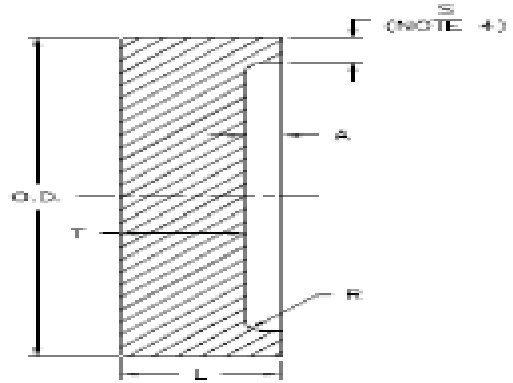
IPS / DIPS FAB TRANSITION

<u>Nominal Size</u> <u>Actual OD</u>	<u>Pressure</u> <u>Class (psi)</u>	<u>Dimension</u> <u>L (in)</u>	<u>Weight per</u> <u>Item (lbs)</u>	<u>Part #</u>
4" x 4" 4.8" x 4.5"	200	10	3	PEIPED11HBTPF
	250		4	
6" x 6" 6.9" x 6.6"	200	11.75	6	PEIPED11HBTUF
	250		7	
8" x 8" 9.1" x 8.6"	200	13	10	PEIPED11HBTXF
	250		12	PEIPED9HBTXF
10" x 10" 11.1" x 10.8"	200	13	14	PEIPED11HBT10F
	250		17	
12" x 12" 13.2" x 12.8"	200	15	20	PEIPED11HBT12F
	250		24	
14" x 14" 15.3" x 14.0"	200	15	35	PEIPED11HBT14F
	250		41	
16" x 16" 17.4" x 16.0"	200	15	45	PEIPED11HBT16F
	250		53	
18" x 18" 19.5" x 18.0"	200	15	56	PEIPED11HBT18F
	250		67	PEIPED9HBT18F
20" x 20" 21.6" x 20.0"	200	15	69	PEIPED11HBT20F
	250		82	
24" x 24" 25.8" x 24.0"	200	15	98	
	250		117	



IPS MOLDED END CAP

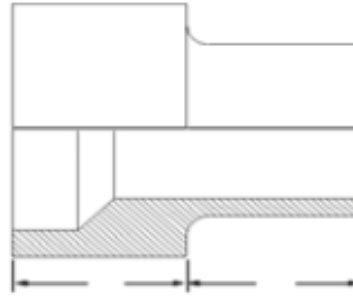
<u>Nominal Size</u>	<u>DR/Wall</u>	<u>Dimension L (in)</u>	<u>Package Weight (lbs)</u>	<u>Part #</u>
3/4"	DR 11	2.30	0.05	PEI11ABCAF
1"	DR 9	2.40	0.05	
	DR 11			PEI11ABCAG
1-1/4"	DR 9	3.31	0.1	
	DR 10	3.94		
	DR11			PEI11ABCAH
1-1/2"	DR 11	3.70	0.15	PEI11ABCAJ
2"	DR 7	4.25	0.30	
	DR 9		0.29	PEI9ABCAK
	DR 11		0.24	PEI11ABCAK
	DR17		0.20	
3"	DR 7	4.80	0.80	PEI7ABCAM
	DR 9		0.75	
	DR 11/ 11.5	3.94	0.50	PEI11ABCAM
	DR 17		0.40	PEI17ABCAM
4"	DR 7	8.50	1.20	PEI7ABCAP
	DR 9		1.00	PEI9ABCAP
	DR 11/11.5	4.25	0.85	PEI11ABCAP
	DR 17		0.75	PEI17ABCAP
6"	DR 7	9.88	4.45	PEI7ABCAU
	DR 9		4.30	
	DR 11/11.5	5.20	2.58	PEI11ABCAU
	DR 17		2.35	PEI17ABCAU
8"	DR 7	5.00	6.00	
	DR 9		5.52	PEI9ABCAX
	DR 11		4.40	PEI11ABCAX
	DR 17		4.08	PEI17ABCAX
10"	DR 11	10.00	11.00	PEI11ABCA10
	DR 17		8.00	
12"	DR 11	11.75	19.00	PEI11ABCA12
	DR 17		13.00	PEI17ABCA12



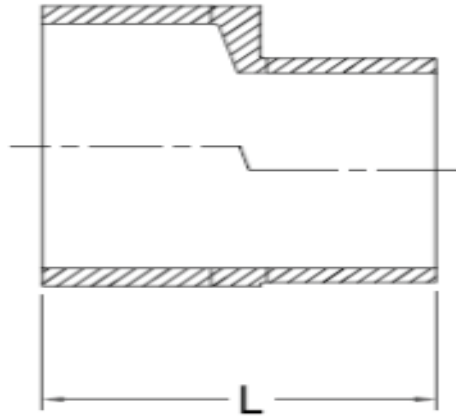
Fabricated IPS End Caps

Nominal Size Actual OD	Pressure Class (psi)	SDR	Dimensions (IN)		Weight per Item (lbs.)	PART# W/ 12" PUP
			L (in)	OAL W/PUP		
10" 10.75"	100	DR 17	4.0	16.0	30	PEI17HBCA10FWP
	160	DR 11	4.0	16.0	30	PEI11HBCA10FWP
	200	DR 9	4.0	16.0	30	PEI9HBCA10F
12" 12.75	100	DR 17	4.0	16.0	39	PEI17HBCA12FWP
	160	DR 11	4.0	16.0	39	PEI11HBCA12FWP
	200	DR 9	5.0	17.0	39	PEI9HBCA12F
14" 14.00"	100	DR 17	4.0	16.0	45	PEI17HBCA14FWP
	160	DR 11	4.0	16.0	45	PEI11HBCA14FWP
	200	DR 9	5.0	17.0	45	PEI9HBCA14F
16" 16.00"	100	DR 17	4.0	16.0	67	PEI17HBCA16FWP
	160	DR 11	5.0	17.0	67	PEI11HBCA16FWP
	200	DR 9	5.0	17.0	67	PEI9HBCA16F
18" 18.00"	100	DR 17	4.0	16.0	85	PEI17HBCA18FWP
	160	DR 11	5.0	17.0	85	PEI11HBCA18FWP
	200	DR 9	5.0	17.0	85	PEI9HBCA18F
20" 20.00"	100	DR 17	5.0	17.0	94	PEI17HBCA20FWP
	160	DR 11	5.0	17.0	94	PEI11HBCA20FWP
22" 22.00"	100	DR 17	5.0	17.0	130	PEI17HBCA22F
	160	DR 11	6.0	18.0	130	PEI11HBCA22F
24" 24.00"	100	DR 17	5.0	17.0	155	PEI17HBCA24FWP
	160	DR 11	6.0	18.0	155	PEI11HBCA24FWP

IPS BILLET REDUCER

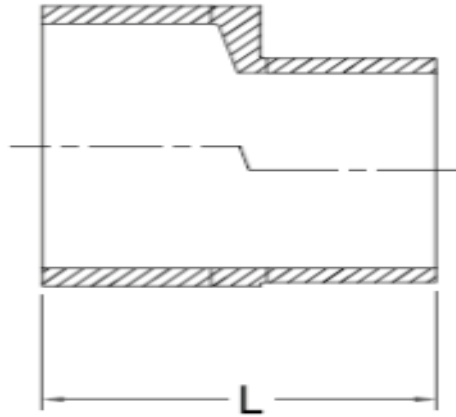


<u>Nominal Size</u>	<u>Pressure Class (psi)</u>	<u>Dimension L (in)</u>	<u>Weight per Item (lbs)</u>	<u>Part #</u>
14" x 10" 14.00" x 10.750"	125	14	26	PEI17HBR1410F
	200		26	PEI11HBR1410F
14" x 12" 14.00" x 12.750"	125	14	28	PEI17HBR1412F
	200		28	PEI11HBR1412F
16" x 14" 16.00" x 14.00"	125	14	36	PEI17HBR1614F
	200		36	PEI11HBR1614F
18" x 14" 18.00" x 14.00"	125	14	45	PEI17HBR1814F
	200		45	PEI11HBR1814F
18" x 16" 18.00" x 16.00"	125	14	47	PEI17HBR1816F
	200		47	PEI11HBR1816F
20" x 18" 20.00" x 18.00"	125	14	56	PEI17HBR2018F
	200		56	PEI11HBR2018F
22" x 20" 22.00" x 20.00"	125	14	69	
	200		69	PEI11HBR2220F
24" x 20" 24.00" x 20.00"	125	18	82	PEI17HBR2420F
	200		82	PEI11HBR2420F
24" x 22" 24.00" x 22.00"	125	18	84	
	200		84	



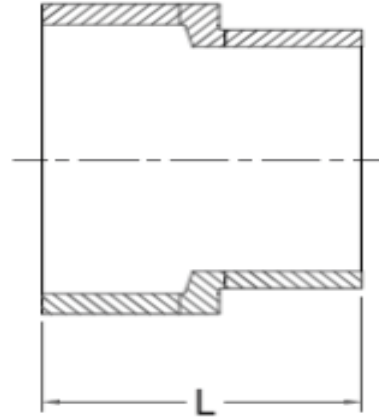
IPS FAB ECCENTRIC REDUCER

Nominal Size Actual OD	Pressure Class (psi)	Dimensions	Std. Item	Weight per	PART #
		L (in)		Item (lbs.)	
3" x 2" 3.50" X 2.38"		13.00	N	2	
	100		N		PEI17HBERMKF
	160		N		PEI11HBERMKF
4" x 3" 4.50" X 3.50"		14.00	N	3	
	100		N		PEI17HBERPMF
	160		N		PEI11HBERPMF
6" x 3" 6.63" X 3.50"		14.50	N	6	
	100		N		PEI17HBERUMF
	160		N		PEI11HBERUMF
6" x 4" 6.63" X 4.50"		15.50	N	6	
	100		N		PEI17HBERUPF
	160		N		PEI11HBERUPF
8" x 4" 8.63" X 4.50"		16.00	N	10	
	100		N		PEI17HBERXPF
	160		N		PEI11HBERXPF
8" x 6" 8.63" X 6.63"		16.50	N	11	
	100		N		PEI17HBERXUF
	160		N		PEI11HBERXUF
10" x 6" 10.75" X 6.63"		17.50	N	18	
	100		N		PEI17HBER10UF
	160		N		PEI11HBER10UF
10" x 8" 10.75" X 8.63"		18.00	N	18	
	100		N		PEI17HBER10XF
	160		N		PEI11HBER10XF
12" x 8" 12.75" X 8.63"		19.50	N	28	
	100		N		PEI17HBER12XF
	160		N		PEI11HBER12XF
12" x 10" 12.75" X 10.75"		19.50	N	28	
	100		N		PEI17HBER1210F
	160		N		PEI11HBER1210F
14" x 10" 14.00" X 10.75"	100	21.00	N	36	PEI17HBER1410F
	160		N		PEI11HBER1410F
14" x 12" 14.00" X 12.75"		22.50	N	36	
	100		N		PEI17HBER1412F
	160		N		PEI11HBER1412F
16" x 12" 16.00" X 12.75"		22.50	N	46	
	100		N		PEI17HBER1612F
	160		N		PEI11HBER1612F



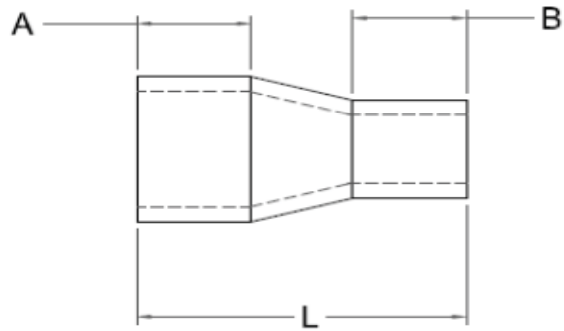
IPS FAB ECCENTRIC REDUCER

Nominal Size Actual OD	Pressure Class (psi)	Dimensions	Std. Item	Weight per	PART #
		L (in)		Item (lbs.)	
16" x 14" 16.00" X 14.00"		22.50	N	46	
	100		N		PEI17HBER1614F
	160		N		PEI11HBER1614F
18" x 14" 18.00" X 14.00"		22.50	N	61	
	100		N		PEI17HBER1814F
	160		N		PEI11HBER1814F
18" x 16" 18.00" X 16.00"		22.50	N	61	
	100		N		PEI17HBER1816F
	160		N		PEI11HBER1816F
20" x 16" 20.00" X 16.00"		22.50	N	75	
	100		N		PEI17HBER2016F
	160		N		PEI11HBER2016F
20" x 18" 20.00" X 18.00"		22.50	N	75	
	100		N		PEI17HBER2018F
	160		N		PEI11HBER2018F
24" x 20" 24.00" X 20.00"		22.50	N	134	
	100		N		PEI17HBER2420F
	160		N		PEI11HBER2420F
24" x 22" 24.00" X 22.00"		22.50	N	134	
	100		N		PEI17HBER2422F
	160		N		PEI11HBER2422F
26" x 24" 26.00" X 24.00"	50	39.90	N	230	
	100		N		PEI17HBER2624F
	160		N		
28" x 24" 28.00" X 24.00"	50	39.20	N	265	
	100		N		
	160		N		
28" x 26" 28.00" X 26.00"	50	54.20	N	265	
	100		N		PEI17HBER2826F
	160		N		
30" x 26" 30.00" X 26.00"	50	53.60	N	306	
	100		N		
	160		N		PEI11HBER3026F



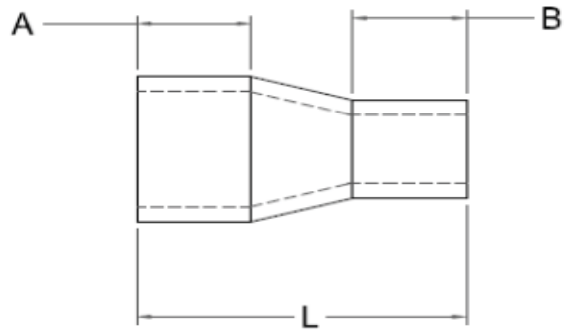
DIPS FAB CONCENTRIC REDUCER

<u>Nominal Size</u> <u>Actual OD</u>	<u>Pressure</u> <u>Class (psi)</u>	<u>Dimension</u> <u>L (in)</u>	<u>Weight per</u> <u>Item (lbs)</u>	<u>Part #</u>
6" x 4" 6.90" x 4.80"	200	6	7	PED11HBRUPF
8" x 6" 9.05" x 6.90"	200	10	11	PED11HBRXUF
10" x 8" 11.00" x 9.050"	200	12	16	PED11HBR10XF
12" x 10" 13.20" x 11.10"	200	12	23	PED11HBR1210F
14" x 12" 15.30" x 13.20"	200	14	33	PED11HBR1412F
16" x 14" 17.40" x 15.30"	200	14	33	PED11HBR1614F
18" x 16" 19.50" x 17.40"	200	14	53	PED11HBR1816F
20" x 18" 21.00" x 19.50"	200	25	74	PED11HBR2018F
24" x 20" 25.88" x 21.60"	200	25	125	PED11HBR2420F



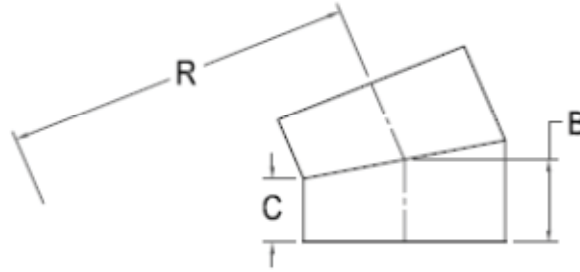
IPS MOLDED REDUCER

Nominal Size	DR	Dimensions A x B x L (in)	Package Weight (lbs)	Part #
1" X 1/2"	DR 11	1.50 X 1.25 X 4.0	0.07	PEI11HBRGD
1" X 3/4"	DR 11	1.50 X 1.75 X 4.50	0.09	PEI11ABRGF
1-1/4" X 1"	DR 11	1.86 X 1.92 X 4.25	0.11	
	DR 11			PEI11ABRHG
1-1/2" X 3/4"	DR 9	2.50 X 2.40 X 5.69	0.18	
	DR 11			PEI11ABRJF
1-1/2" X 1"	DR 9	2.50 X 2.28 X 5.75	0.19	
	DR 11		0.16	PEI11ABRJG
2" X 1"	DR 11	2.49 X 2.88 X 6.31	0.29	PEI11ABRKG
2" X 1-1/4"	DR 9	3.15 X 2.56 X 6.44		
	DR 11			
	DR 11		0.33	PEI11ABRKH
2" X 1-1/2"	DR 9	2.50 X 2.72 X 6.00		PEI9ABRKJ
	DR 11		0.30	PEI11ABRKJ
3" X 2"	DR 7	3.22 X 2.50 X 6.55	1.62	PEI7ABRMK
	DR 9		1.21	PEI9ABRMK
	DR 11		0.65	PEI11ABRMK
	DR 17		0.60	
4" X 2"	DR 7	3.00 X 3.00 X 11.87	2.38	PEI7ABRPK
	DR 9		0.89	PEI9ABRPK
	DR 11		1.02	PEI11ABRPK
	DR 17		0.89	PEI17ABRPK
4" X 3"	DR 7	3.13 X 3.13 X 8.62	2.78	PEI7ABRPM
	DR 9		1.73	PEI9ABRPM
	DR 11		1.18	PEI11ABRPM
	DR 17		0.98	PEI17ABRPM
6" X 4"	DR 7	4.22 X 3.75 X 9.13	6.00	PEI7ABRUP
	DR 9		3.67	PEI9ABRUP
	DR 11		3.26	PEI11ABRUP
	DR 17		3.30	PEI17ABRUP
8" X 4"	DR 11	5.99 X 4.05 X 12.80	6.30	PEI11ABRXP
	DR 17		4.20	PEI17ABRXP
8" X 6"	DR 7	5.00 X 4.64 X 10.70	10.68	
	DR 9		7.69	PEI9ABRXU
	DR 11		6.13	PEI11ABRXU
	DR 17		5.41	PEI17ABRXU



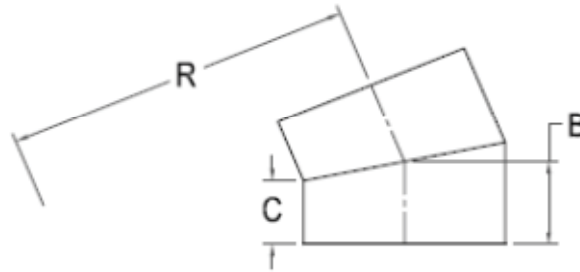
IPS MOLDED REDUCER

<u>Nominal Size</u>	<u>DR</u>	<u>Dimensions A x B x L (in)</u>	<u>Package Weight (lbs)</u>	<u>Part #</u>
10" X 6"	DR 11	6.16 X 5.29 X 14.06	10.30	PEI11HBR10UF
	DR 17		7.70	PEI17HBR10UF
12" X 6"	DR 11	6.95 X 5.22 X 16.00	16.60	PEI11ABR12U
	DR 17		11.30	PEI17HBR12U
10" X 8"	DR 9	6.63 X 6.25 X 14.98	16.50	PEI9ABR10X
	DR 11	6.25 X 5.875 X 14.37	15.45	PEI11ABR10X
	DR 17	6.25 X 5.813 X 14.37	10.21	PEI17ABR10X
12" X 8"	DR 11	7.09 X 6.10 X 16.54	19.11	PEI11ABR12X
	DR 17	7.09 X 6.10 X 16.54	12.82	PEI17ABR12X
12" X 10"	DR 11	7.09 X 6.69 X 16.54	21.66	PEI11ABR1210
	DR 17	7.09 X 6.69 X 16.54	14.43	PEI17ABR1210



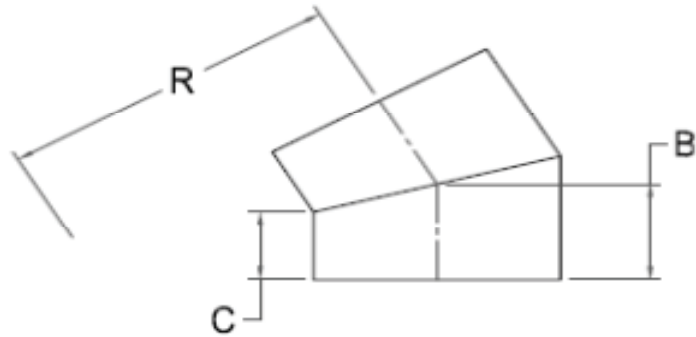
IPS FAB 2 SEG. 22.5 ELBOW

<u>Nominal Size</u> <u>Actual OD</u>	<u>Pressure</u> <u>Class (psi)</u>	<u>Feed</u> <u>Stock</u>	<u>Dimension</u> <u>R x C x B (in)</u>	<u>Weight per</u> <u>Item (lbs)</u>	<u>Part #</u>
2" 2.3750"	100	DR 17	13-1/8 x 4 x 4-1/4	1	PEI17HB225KF2
	160	DR 11		1	PEI11HB225KF2
	200	DR 9		1	PEI9HB225KF2
	250	DR 7		1	PEI7HB225KF2
3" 3.50"	100	DR 17	13-5/8 x 4 x 4-3/8	1	PEI17HB225MF2
	160	DR 11		1	PEI11HB225MF2
	200	DR 9		1	PEI9HB225MF2
	250	DR 7		2	PEI7HB225MF2
4" 4.500"	100	DR 17	14-1/4 x 5 x 5-1/2	2	PEI17HB225PF2
	160	DR 11		2	PEI11HB225PF2
	200	DR 9		3	PEI9HB225PF2
	250	DR 7		3	PEI7HB225PF2
6" 6.625"	100	DR 17	15-1/4 x 6 x 16-5/8	6	PEI17HB225UF2
	160	DR 11		6	PEI11HB225UF2
	200	DR 9		7	PEI9HB225UF2
	250	DR 7		8	PEI7HB225UF2
8" 8.625"	100	DR 17	16-1/4 x 6-1/2 x 7-3/8	10	PEI17HB225XF2
	160	DR 11		10	PEI11HB225XF2
	200	DR 9		12	PEI9HB225XF2
	250	DR 7		15	PEI7HB225XF2
10" 10.750"	100	DR 17	17-1/4 x 6-1/2 x 7-5/8	11	PEI17HB22510F2
	160	DR 11		17	PEI11HB22510F2
	200	DR 9		20	PEI9HB22510F2
	250	DR 7		24	PEI7HB22510F2
12" 12.750"	100	DR 17	19-1/2 x 8 x 9-1/4	19	PEI17HB22512F2
	160	DR 11		28	PEI11HB22512F2
	200	DR 9		34	PEI9HB22512F2
	250	DR 7		42	PEI7HB22512F2
14" 14.000"	100	DR 17	21 x 8 x 9-3/8	23	PEI17HB22514F2
	160	DR 11		35	PEI11HB22514F2
	200	DR 9		41	PEI9HB22514F2
	250	DR 7		51	PEI7HB22514F2
16" 16.000"	100	DR 17	24 x 8 x 9-5/8	31	PEI17HB22516F2
	160	DR 11		46	PEI11HB22516F2
	200	DR 9		55	PEI9HB22516F2
	250	DR 7		66	PEI7HB22516F2
18" 18.000"	100	DR 17	27 x 8 x 9-3/4	41	PEI17HB22518F2
	160	DR 11		60	PEI11HB22518F2
	200	DR 9		71	PEI9HB22518F2
	250	DR 7		85	



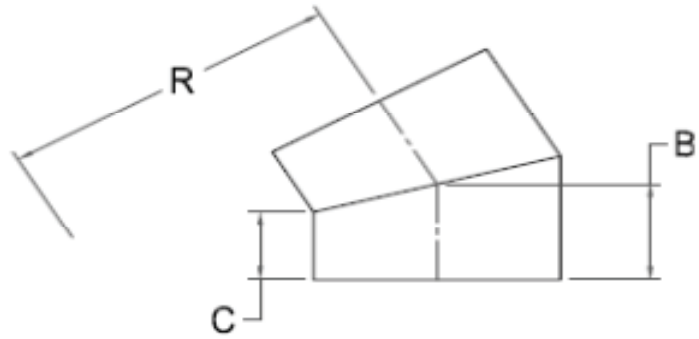
IPS FAB 2 SEG. 22.5 ELBOW

<u>Nominal Size</u> <u>Actual OD</u>	<u>Pressure</u> <u>Class (psi)</u>	<u>Feed</u> <u>Stock</u>	<u>Dimension</u> <u>R x C x B (in)</u>	<u>Weight per</u> <u>Item (lbs)</u>	<u>Part #</u>
20" 20.000"	100	DR 17	30 x 8 x 10	51	PEI17HB22520F2
	160	DR 11		75	PEI11HB22520F2
	200	DR 9		90	PEI9HB22520F2
	250	DR 7		108	PEI7HB22520F2
22" 22.000"	100	DR 17	33 x 8 x 10-1/4	63	
	160	DR 11		93	PEI11HB22522F2
	200	DR 9		111	PEI9HB22522F2
	250	DR 7		133	
24" 24.000"	100	DR 17	36 x 8 x 10-3/8	76	PEI17HB22524F2
	160	DR 11		113	PEI11HB22524F2
	200	DR 9		135	PEI9HB22524F2
	250	DR 7		161	PEI7HB22524F2
26" 26.000"	100	DR 17	39 x 14 x 16-5/8	142	PEI17HB22526F2
	160	DR 11		220	PEI11HB22526F2
	200	DR 9		253	
28" 28.000"	100	DR 17	42 x 14 x 16-3/4	167	PEI17HB22528F2
	160	DR 11		249	PEI11HB22528F2
	200	DR 9		297	PEI9HB22528F2
30" 30.000"	100	DR 17	45 x 14 x 17	194	PEI17HB22530F2
	160	DR 11		289	PEI11HB22530F2
	200	DR9		345	PEI9HB22530F2
32" 32.000"	100	DR 17	48 x 14 x 17-1/8	223	PEI17HB22532F2
	160	DR 11		333	PEI11HB22532F2
34" 34.000"	100	DR 17	51 x 14 x 17-3/8	255	PEI17HB22534F2
	160	DR 11		380	PEI11HB22534F2
36" 36.000"	100	DR 17	54 x 14 x 17-5/8	286	PEI17HB22536F2
	160	DR 11		426	PEI11HB22536F2
42" 42.000"	80	DR 21	63 x 21 x 25-1/8	462	PEI21HB22542F2
	100	DR 17		563	PEI17HB22542F2
48" 48.000"	80	DR 21	72 x 21 x 25-3/4	617	PEI21HB22548F2
	100	DR 17		753	PEI17HB22548F2
54" 54.000"	65	DR 26	81 x 21 x 26-3/8	652	PEI26HB22554F2
	80	DR 21		799	PEI21HB22554F2



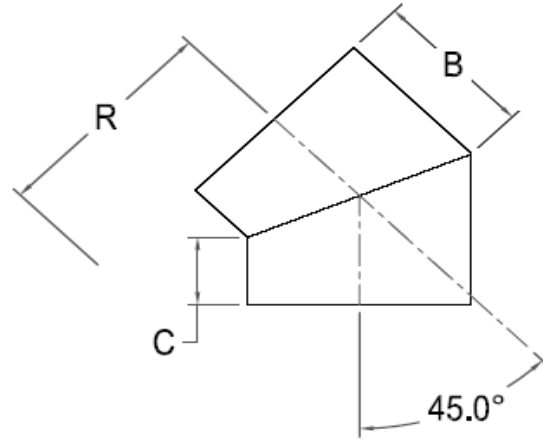
IPS FAB 2 SEG. 30 ELBOW

<u>Nominal Size</u> <u>Actual OD</u>	<u>Pressure</u> <u>Class (psi)</u>	<u>Feed</u> <u>Stock</u>	<u>Dimension</u> <u>R x C x B (in)</u>	<u>Weight per</u> <u>Item (lbs)</u>	<u>Part #</u>
2" 2.375"	160	DR 11	6-7/8 x 4 x 4-3/8	1	PEI11HB3KF2
	200	DR 9		1	PEI9HB3KF2
	250	DR 7		1	
3" 3.500"	160	DR 11	7-3/8 x 4 x 4-1/2	1	PEI11HB3MF2
	200	DR 9		2	PEI9HB3MF2
	250	DR 7		2	
4" 4.500"	160	DR 11	7-7/8 x 5 x 5-5/8	2	PEI11HB3PF2
	200	DR 9		3	PEI9HB3PF2
	250	DR 7		3	
6" 6.625"	160	DR 11	12-5/8 x 6 x 6-7/8	6	PEI11HB3UF2
	200	DR 9		7	PEI9HB3UF2
	250	DR 7		8	
8" 8.625"	160	DR 11	13-5/8 x 6 1/2 x 7-5/8	11	PEI11HB3XF2
	200	DR 9		13	PEI9HB3XF2
	250	DR 7		15	PEI7HB3XF2
10" 10.750"	100	DR 17	16-1/2 x 6-1/2 X 8	12	PEI17HB310F2
	160	DR 11		18	PEI11HB310F2
	200	DR 9		22	PEI9HB310F2
	250	DR 7		26	PEI7HB310F2
12" 12.750"	100	DR 17	19-1/8 x 8 x 9-3/4	21	PEI17HB312F2
	160	DR 11		32	PEI11HB312F2
	200	DR 9		38	PEI9HB312F2
	250	DR 7		45	
14" 14.000"	100	DR 17	21 x 8 x 9-7/8	27	
	160	DR 11		40	PEI11HB314F2
	200	DR 9		48	PEI9HB314F2
	250	DR 7		58	
16" 16.000"	100	DR 17	24 x 8 x 10-1/8	37	
	160	DR 11		55	PEI11HB316F2
	200	DR 9		66	PEI9HB316F2
	250	DR 7		79	
18" 18.000"	100	DR 17	27 x 8 x 10-1/2	47	PEI17HB318F2
	160	DR 11		70	PEI11HB318F2
	200	DR 9		83	PEI9HB318F2
	250	DR 7		100	
20" 20.000"	100	DR 17	30 x 8 x 10-3/4	60	PEI17HB320F2
	160	DR 11		90	PEI11HB320F2
	200	DR 9		108	PEI9HB320F2
	250	DR 7		129	
22" 22.000"	100	DR 17	33 x 8 x 11	76	
	160	DR 11		114	
	200	DR 9		136	
	250	DR 7		162	



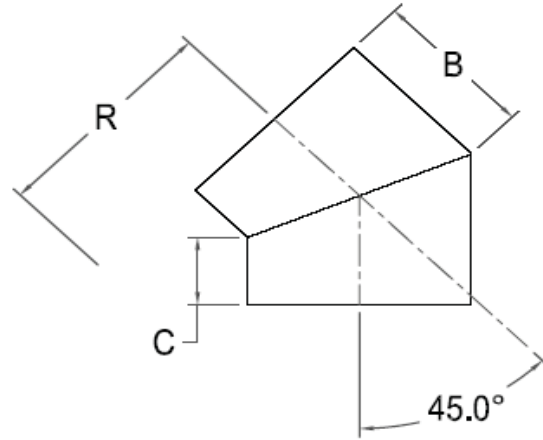
IPS FAB 2 SEG. 30 ELBOW

<u>Nominal Size</u> <u>Actual OD</u>	<u>Pressure Class (psi)</u>	<u>Feed Stock</u>	<u>Dimension</u> <u>R x C x B (in)</u>	<u>Weight per Item (lbs)</u>	<u>Part #</u>
24" 24.000"	100	DR 17	36 x 8 x 11-1/4	94	PEI17HB324F2
	160	DR 11		141	PEI11HB324F2
	200	DR 9		168	PEI9HB324F2
	250	DR 7		201	
28" 28.000"	100	DR 17	42 x 14 x 17-3/4	198	
	160	DR 11		295	
	200	DR 9		353	PEI9HB328F2
30" 30.000"	100	DR 17	45 x 14 x 18	228	PEI17HB330F2
	160	DR 11		339	PEI11HB330F2
	200	DR 9		405	
32" 32.000"	100	DR 17	48 x 14 x 18-1/4	266	
	160	DR 11		396	
34" 34.000"	100	DR 17	51 x 14 x 18-1/2	307	
	160	DR 11		458	PEI11HB334F2
36" 36.000"	100	DR 17	54 x 14 x 18-7/8	353	PEI17HB336F2
	160	DR 11		525	PEI11HB336F2
42" 42.000"	80	DR 21	63 x 21 x 26-5/8	513	
	100	DR 17		659	
48" 48.000"	80	DR 21	72 x 21 x 27-1/2	742	
	100	DR 17		900	
54" 54.000"	65	DR 26	81 x 21 x 28-1/2	775	
	80	DR 21		969	



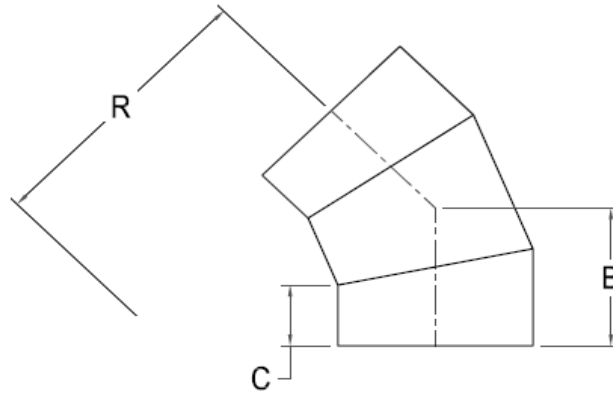
IPS FAB 2 SEG. 45 ELBOW

<u>Nominal Size</u> <u>Actual OD</u>	<u>Pressure Class (psi)</u>	<u>Feed Stock</u>	<u>Dimension R x C x B (in)</u>	<u>Weight per Item (lbs)</u>	<u>Part #</u>
8" 8.630"	100	DR 17	10-5/8 x 6-1/2 x 8-1/4	9	PEI17HB4XF2
	160	DR 11		13	PEI11HB4XF2
	200	DR 9		15	PEI9HB4XF2
	250	DR 7		19	
10" 10.750"	100	DR 17	12-5/8 x 6-1/2 x 8-3/4	12	PEI17HB410F2
	160	DR 11		18	PEI11HB410F2
	200	DR 9		22	PEI9HB410F2
	250	DR 7		26	PEI7HB410F2
12" 12.750"	100	DR 17	13-5/8 x 8 x 10-5/8	21	PEI17HB412F2
	160	DR 11		32	PEI11HB412F2
	200	DR 9		38	PEI9HB412F2
	250	DR 7		45	PEI7HB412F2
14" 14.000"	100	DR 17	14-1/4 x 8 x 10-7/8	27	PEI17HB414F2
	160	DR 11		40	PEI11HB414F2
	200	DR 9		48	PEI9HB414F2
	250	DR 7		58	PEI7HB414F2
16" 16.000"	100	DR 17	15-1/4 x 8 x 11-5/16	37	PEI17HB416F2
	160	DR 11		55	PEI11HB416F2
	200	DR 9		66	PEI9HB416F2
	250	DR 7		79	PEI7HB416F2
18" 18.000"	100	DR 17	16-1/4 x 8 x 11-3/4	47	PEI17HB418F2
	160	DR 11		70	PEI11HB418F2
	200	DR 9		83	PEI9HB418F2
	250	DR 7		100	PEI7HB418F2
20" 20.000"	100	DR 17	17-1/4 x 8 x 12-1/8	60	PEI17HB420F2
	160	DR 11		90	PEI11HB420F2
	200	DR 9		108	PEI9HB420F2
	250	DR 7		129	PEI7HB420F2
22" 22.000"	100	DR 17	23-1/16 x 8 x 12-9/16	76	PEI17HB422F2
	160	DR 11		114	PEI11HB422F2
	200	DR 9		136	PEI9HB422F2
	250	DR 7		162	PEI7HB422F2
24" 24.000"	100	DR 17	24-1/16 x 8 x 13	94	PEI17HB424F2
	160	DR 11		141	PEI11HB424F2
	200	DR 9		168	PEI9HB424F2
	250	DR 7		201	PEI7HB424F2



IPS FAB 2 SEG. 45 ELBOW

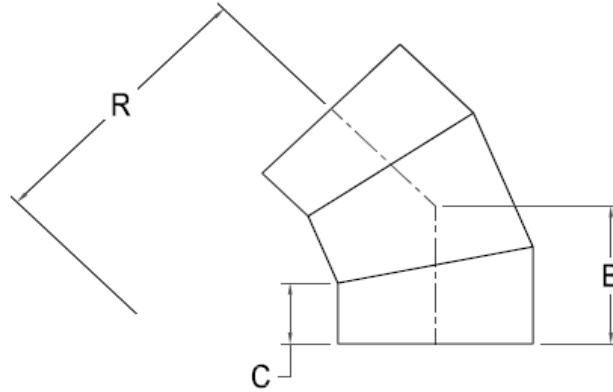
<u>Nominal Size</u> <u>Actual OD</u>	<u>Pressure Class (psi)</u>	<u>Feed Stock</u>	<u>Dimension</u> <u>R x C x B (in)</u>	<u>Weight per Item (lbs)</u>	<u>Part #</u>
28" 28.000"	100	DR 17	38-3/16 x 14 x 19-13/16	198	PEI17HB428F2
	160	DR 11		295	PEI11HB428F2
	200	DR 9		353	PEI9HB428F2
30" 30.000"	100	DR 17	38-5/16 x 14 x 20-3/16	228	PEI17HB430F2
	160	DR 11		339	PEI11HB430F2
	200	DR 9		405	PEI9HB430F2
32" 32.000"	100	DR 17	38-3/8 x 14 x 20-5/8	266	PEI17HB432F2
	160	DR 11		396	PEI11HB432F2
34" 34.000"	100	DR 17	38-7/16 x 14 x 21-1/16	307	PEI17HB434F2
	160	DR 11		458	PEI11HB434F2
36" 36.000"	100	DR 17	38-1/2 x 14 x 21-7/16	353	PEI17HB436F2
	160	DR 11		525	PEI11HB436F2
42" 42.000"	80	DR 21	50-5/16 x 21 x 29-11/16	513	
	100	DR 17		659	PEI17HB442F2
48" 48.000"	80	DR 21	50-9/16 x 21 x 30-15/16	742	PEI21HB448F2
	100	DR 17		905	PEI17HB448F2
54" 54.000"	65	DR 26	50-3/4 x 21 x 32-3/16	775	PEI26HB454F2
	80	DR 21		969	PEI21HB454F2



IPS FAB 3 SEG. 45 ELBOW

<u>Nominal Size</u> Actual OD	<u>Pressure Class (psi)</u>	<u>Feed Stock</u>	<u>Dimension</u> R x C x B (in)	<u>Weight per Item (lbs)</u>	<u>Part #</u>
2" 2.375"	160	DR 11	13-1/8 x 4 x 7	1	PEI11HB4KF3
	200	DR 9		1	PEI9HB4KF3
	250	DR 7		1	PEI7HB4KF3
3" 3.500"	160	DR 11	13-5/8 x 4 x 7-1/4	2	PEI11HB4MF3
	200	DR 9		2	PEI9HB4MF3
	250	DR 7		3	PEI7HB4MF3
4" 4.500"	160	DR 11	14-1/4 x 5 x 8-1/2	3	PEI11HB4PF3
	200	DR 9		4	PEI9HB4PF3
	250	DR 7		5	
6" 6.625"	160	DR 11	15-1/4 x 6 x 10	8	PEI11HB4UF3
	200	DR 9		10	PEI9HB4UF3
	250	DR 7		12	PEI7HB4UF3
8" 8.625"	160	DR 11	16-1/4 x 6-1/2 x 10-7/8	15	PEI11HB4XF3
	200	DR 9		18	PEI9HB4XF3
	250	DR 7		22	PEI7HB4XF3
10" 10.750"	100	DR 17	17-1/4 x 6-1/2 x 11-1/4	16	PEI17HB410F3
	160	DR 11		24	PEI11HB410F3
	200	DR 9		29	PEI9HB410F3
	250	DR 7		35	PEI7HB410F3
12" 12.750"	100	DR 17	19-1/2 x 8 x 13-1/2	27	PEI17HB412F3
	160	DR 11		40	PEI11HB412F3
	200	DR 9		48	PEI9HB412F3
	250	DR 7		60	PEI7HB412F3
14" 14.000"	100	DR 17	21 x 8 x 13-7/8	34	PEI17HB414F3
	160	DR 11		50	PEI11HB414F3
	200	DR 9		60	PEI9HB414F3
	250	DR 7		74	PEI7HB414F3
16" 16.000"	100	DR 17	24 x 8 x 14-3/4	46	PEI17HB416F
	160	DR 11		70	PEI11HB416F3
	200	DR 9		83	PEI9HB416F3
	250	DR 7		99	PEI7HB416F3
18" 18.000"	100	DR 17	27 x 8 x 15-5/8	62	PEI17HB418F3
	160	DR 11		92	PEI11HB418F3
	200	DR 9		111	PEI9HB418F3
	250	DR 7		132	PEI7HB418F3
20" 20.000"	100	DR 17	30 x 8 x 16-1/2	80	PEI17HB420F3
	160	DR 11		121	PEI11HB420F3
	200	DR 9		144	PEI9HB420F3
	250	DR 7		171	

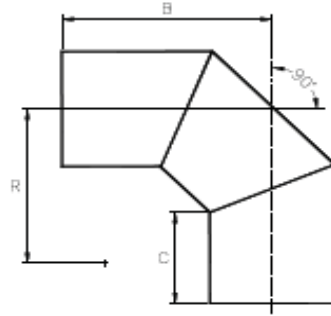
Dimensions and weights are approximate and subject to change



IPS FAB 3 SEG. 45 ELBOW

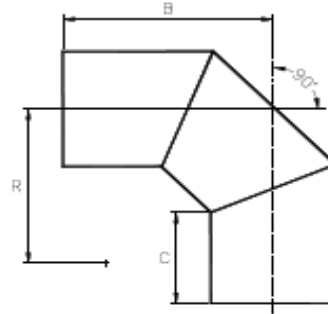
<u>Nominal Size</u> Actual OD	<u>Pressure Class (psi)</u>	<u>Feed Stock</u>	<u>Dimension</u> R x C x B (in)	<u>Weight per Item (lbs)</u>	<u>Part #</u>
22" 22.000"	100	DR 17	33 x 8 x 17-1/4	104	PEI17HB422F3
	160	DR 11		153	PEI11HB422F3
	200	DR 9		183	
	250	DR 7		219	
24" 24.000"	100	DR 17	36 x 8 x 18-1/8	129	PEI17HB424F3
	160	DR 11		191	PEI11HB424F3
	200	DR 9		228	PEI9HB424F3
	250	DR 7		272	PEI7HB424F3
26" 26.000"	100	DR 17	39 x 14 x 25	209	PEI17HB426F3
	160	DR 11		323	PEI11HB426F3
	200	DR 9		371	PEI9HB426F3
	254	DR 7		443	
28" 28.000"	100	DR 17	42 x 14 x 25-7/8	250	PEI17HB428F3
	160	DR 11		372	PEI11HB428F3
	200	DR 9		444	
30" 30.000"	100	DR 17	45 x 14 x 26-5/8	296	PEI17HB430F3
	160	DR 11		441	PEI11HB430F3
	200	DR 9		526	PEI9HB430F3
32" 32.000"	100	DR 17	48 x 14 x 27-1/2	347	PEI17HB432F3
	160	DR 11		516	PEI11HB432F3
34" 34.000"	100	DR 17	51 x 14 x 28-3/8	404	PEI17HB434F3
	160	DR 11		601	PEI11HB434F3
36" 36.000"	100	DR 17	54 x 14 x 29-1/4	466	PEI17HB436F3
	160	DR 11		693	PEI11HB436F3
42" 42.000"	80	DR 21	63 x 21 x 38-3/4	691	
	100	DR 17		844	PEI17HB442F3
48" 48.000"	80	DR 21	72 x 21 x 41-1/4	960	PEI21HB448F3
	100	DR 17		1171	PEI17HB448F3
54" 54.000"	65	DR 26	81 x 21 x 43-3/4	1051	PEI26HB454F3
	80	DR 21		1287	

IPS FAB 3 SEG 90 ELBOW



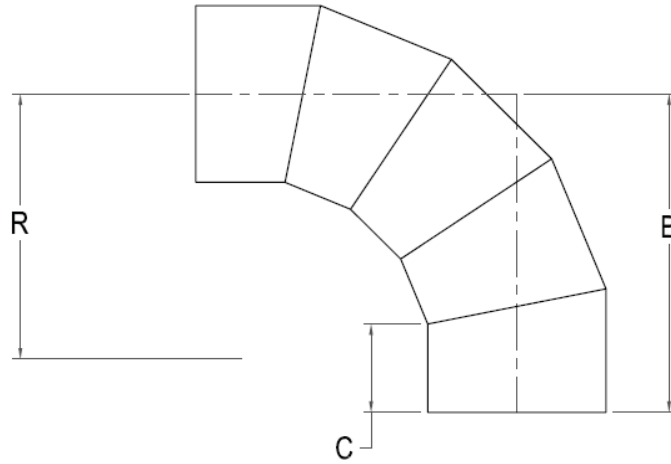
Nominal Size	Pressure	Feed Stock	Dimensions	Weight per	Part #
Actual OD	Class (psi)		R x C x B (in)	Item (lbs.)	
8" 8.625"	100	DR 17	10-3/4 X 6-1/2 X 14-5/8	14	PEI17HB9XF3
	160	DR 11		20	PEI11HB9XF3
	200	DR 9		23	PEI9HB9XF3
	250	DR 7		29	PEI7HB9XF3
10" 10.750"	100	DR 17	12-5/8 x 6-1/2 x 16-1/8	21	PEI17HB910F3
	160	DR 11		31	PEI11HB910F3
	200	DR 9		37	PEI9HB910F3
	250	DR 7		43	PEI7HB910F3
12" 12.750"	100	DR 17	13-5/8 x 8 x 18-5/8	34	PEI17HB912F3
	160	DR 11		51	PEI11HB912F3
	200	DR 9		61	PEI9HB912F3
	250	DR 7		72	PEI7HB912F3
14" 14.000"	100	DR 17	14-1/4 x 8 x 19-1/4	42	PEI17HB914F3
	160	DR 11		62	PEI11HB914F3
	200	DR 9		75	PEI9HB914F3
	250	DR 7		89	PEI7HB914F3
16" 16.000"	100	DR 17	15-1/4 x 8 x 20-1/4	56	PEI17HB916F3
	160	DR 11		84	PEI11HB916F3
	200	DR 9		100	PEI9HB916F3
	250	DR 7		120	PEI7HB916F3
18" 18.000"	100	DR 17	16-1/4 x 8 x 21-1/4	76	PEI17HB918F3
	160	DR 11		113	PEI11HB918F3
	200	DR 9		135	PEI9HB918F3
	250	DR 7		161	PEI7HB918F3
20" 20.000"	100	DR 17	17-1/4 x 8 x 22-1/4	98	PEI17HB920F3
	160	DR 11		147	PEI11HB920F3
	200	DR 9		175	PEI9HB920F3
	250	DR 7		209	PEI7HB920F3
22" 22.000"	100	DR 17	23-1/16 x 8 x 26-1/16	134	PEI17HB922F3
	160	DR 11		201	PEI11HB922F3
	200	DR 9		239	PEI9HB922F3
	250	DR 7		286	
24" 24.000"	100	DR 17	24-1/16 x 8 x 27-1/16	167	PEI17HB924F3
	160	DR 11		250	PEI11HB924F3
	200	DR 9		298	PEI9HB924F3
	250	DR 7		356	PEI7HB924F3

IPS FAB 3 SEG 90 ELBOW



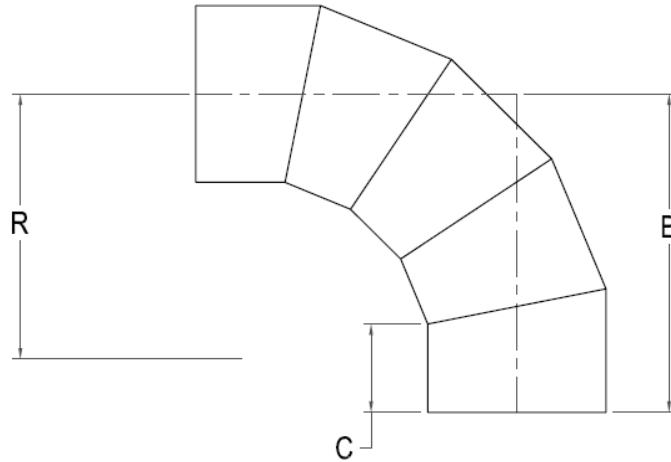
Nominal Size	Pressure	Feed Stock	Dimensions	Weight per	Part #
Actual OD	Class (psi)		R x C x B (in)	Item (lbs.)	
28"† 28.000"	100	DR 17	38-3/16 x 14 x 42-3/16	352	PEI17HB928F3
	160	DR 11		525	PEI11HB928F3
	200	DR 9		626	PEI9HB928F3
30"† 30.000"	100	DR 17	38-5/16 x 14 x 42-5/8	410	PEI17HB930F3
	160	DR 11		611	PEI11HB930F3
	200	DR 9		729	PEI9HB930F3
32"† 32.000"	100	DR 17	38-3/8 x 14 x 43-1/8	473	PEI17HB932F3
	160	DR 11		705	PEI11HB932F3
34"† 34.000"	100	DR 17	38-7/16 x 14 x 43-9/16	542	
	160	DR 11		807	
36"† 36.000"	100	DR 17	38-1/2 x 14 x 44	616	PEI17HB936F3
	160	DR 11		917	PEI11HB936F3
42"† 42.000"	80	DR 21	50-5/16 x 21 x 59-3/16	925	PEI21HB942F3
	100	DR 17		1,129	PEI17HB942F3
48" 48.000"	80	DR 21	50-9/16 x 21 x 60-9/16	1,244	PEI21HB948F3
	100	DR 17		1,518	PEI17HB948F3
54" 54.000"	65	DR 26	50-3/4 x 21 x 61-15/16	1,284	PEI26HB954F3
	80	DR 21		1,605	

† - Fittings 28" - 42" are produced to dimensional requirements of F-714 and can be manufactured to meet AWWA standards for a premium.



FAB IPS 5 SEG 90

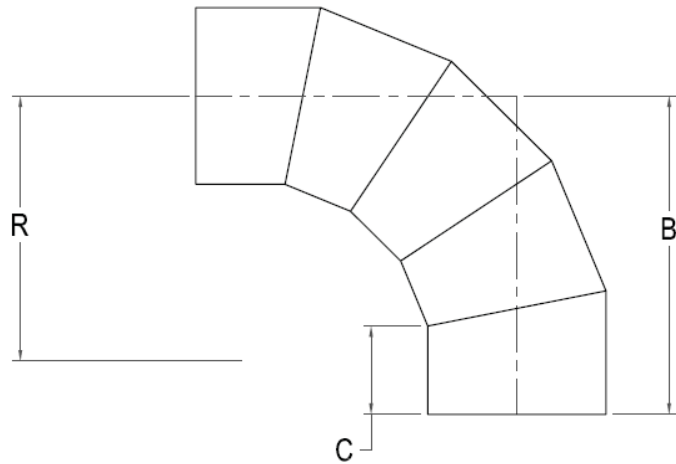
<u>Nominal Size</u> <u>Actual OD</u>	<u>Pressure</u> <u>Class (psi)</u>	<u>Feed</u> <u>Stock</u>	<u>Dimension</u> <u>R x C x B (in)</u>	<u>Weight per</u> <u>Item (lbs)</u>	<u>Part #</u>
2" 2.375"	100	DR 17	13-1/8 x 4 x 14-3/4		PEI17HB9KF5
	160	DR 11		2	PEI11HB9KF5
	200	DR 9		2	PEI9HB9KF5
	250	DR 7		2	PEI7HB9KF5
3" 3.500"	100	DR 17	13-5/8 x 4 x 15-1/4		PEI17HB9MF5
	160	DR 11		3	PEI11HB9MF5
	200	DR 9		4	PEI9HB9MF5
	250	DR 7		4	
4" 4.500"	100	DR 17	14-1/4 x 5 x 16-7/8		PEI17HB9PF5
	160	DR 11		6	PEI11HB9PF5
	200	DR 9		7	PEI9HB9PF5
	250	DR 7		8	PEI7HB9PF5
6" 6.625"	100	DR 17	15-1/4 x 6 x 18-7/8		PEI17HB9UF5
	160	DR 11		13	PEI11HB9UF5
	200	DR 9		16	PEI9HB9UF5
	250	DR 7		19	PEI7HB9UF5
8" 8.625"	100	DR 17	16-1/4 x 6-1/2 x 20-3/8		PEI17HB9XF5
	160	DR 11		24	PEI11HB9XF5
	200	DR 9		29	PEI9HB9XF5
	250	DR 7		35	PEI7HB9XF5
10" 10.750"	100	DR 17	17-1/4 x 6-1/2 x 21-3/8	26	PEI17HB910F5
	160	DR 11		39	PEI11HB910F5
	200	DR 9		47	PEI9HB910F5
	250	DR 7		58	PEI7HB910F5
12" 12.750"	100	DR 17	19-1/2 x 8 x 24-7/8	43	PEI17HB912F5
	160	DR 11		64	PEI11HB912F5
	200	DR 9		77	PEI9HB912F5
	250	DR 7		95	PEI7HB912F5
14" 14.000"	100	DR 17	21 x 8 x 26-1/4	54	PEI17HB914F5
	160	DR 11		81	PEI11HB914F5
	200	DR 9		97	PEI9HB914F5
	250	DR 7		120	
16" 16.000"	100	DR 17	24 x 8 x 28-7/8	77	PEI17HB916F5
	160	DR 11		115	PEI11HB916F5
	200	DR 9		137	PEI9HB916F5
	250	DR 7		164	PEI7HB916F5



FAB IPS 5 SEG 90

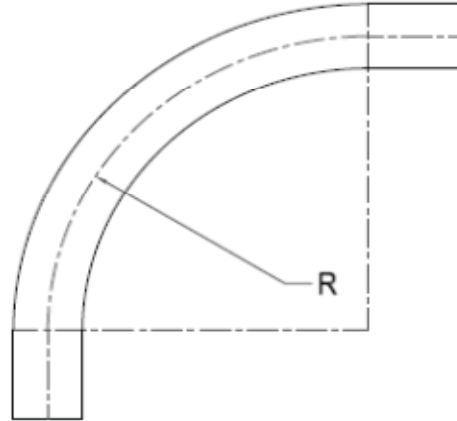
<u>Nominal Size</u> <u>Actual OD</u>	<u>Pressure Class (psi)</u>	<u>Feed Stock</u>	<u>Dimension</u> <u>R x C x B (in)</u>	<u>Weight per Item (lbs)</u>	<u>Part #</u>
18" 18.000"	100	DR 17	27 x 8 x 31-3/8	106	PEI17HB918F5
	160	DR 11		158	PEI11HB918F5
	200	DR 9		189	PEI9HB918F5
	250	DR 7		225	PEI7HB918F5
20" 20.000"	100	DR 17	30 x 8 x 34	141	PEI17HB920F5
	160	DR 11		210	PEI11HB920F5
	200	DR 9		251	PEI9HB920F5
	250	DR 7		300	
22" 22.000"	100	DR 17	33 x 8 x 36-5/8	183	PEI17HB922F5
	160	DR 11		273	PEI11HB922F5
	200	DR 9		325	PEI9HB922F5
	250	DR 7		389	
24" 24.000"	100	DR 17	36 x 8 x 39-1/4	232	PEI17HB924F5
	160	DR 11		346	PEI11HB924F5
	200	DR 9		413	PEI 9HB924F5
	250	DR 7		493	PEI7HB924F5
26" 26.000"	100	DR 17	39 x 14 x 47-7/8	376	
	160	DR 11		583	PEI11HB926F5
	200	DR 9		669	
	254	DR 7		800	
28" 28.000"	100	DR 17	42 x 14 x 50-3/8	415	PEI17HB928F5
	160	DR 11		619	PEI11HB928F5
	200	DR 9		739	
30" 30.000"	100	DR 17	45 x 14 x 53	500	PEI17HB930F5
	160	DR 11		744	PEI11HB930F5
	200	DR 9		888	PEI9HB930F5
32" 32.000"	100	DR 17	48 x 14 x 55-5/8	594	PEI17HB932F5
	160	DR 11		885	PEI11HB932F5
34" 34.000"	100	DR 17	51 x 14 x 58-1/4	700	
	160	DR 11		1043	PEI11HB934F5
36" 36.000"	100	DR 17	54 x 14 x 60-7/8	818	PEI17HB936F5
	160	DR 11		1218	PEI11HB936F5

FAB IPS 5 SEG 90

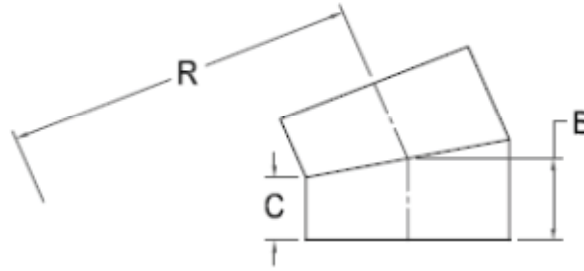


<u>Nominal Size</u> <u>Actual OD</u>	<u>Pressure Class (psi)</u>	<u>Feed Stock</u>	<u>Dimension</u> <u>R x C x B (in)</u>	<u>Weight per Item (lbs)</u>	<u>Part #</u>
42" 42.000"	80	DR 21	63 x 21 x 75-5/8	1150	
	100	DR 17		1403	PEI17HB942F5
48" 48.000"	80	DR 21	72 x 21 x 83-1/2	1645	PEI21HB948F5
	100	DR 17		2007	PEI17HB948F5
54" 54.000"	65	DR 26	81 x 21 x 91-1/4	1847	PEI26HB954F5
	80	DR 21		2262	

IPS SWEEP 90

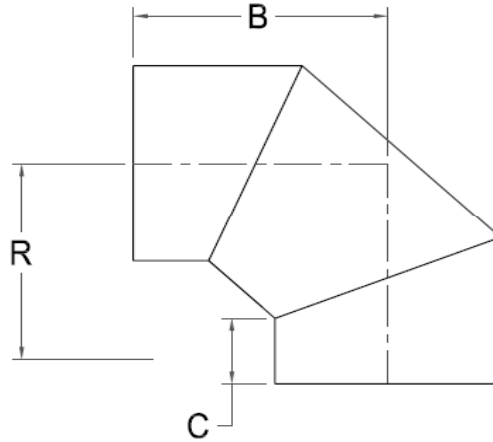


<u>Size (IPS)</u>	<u>Pressure Class (psi)</u>	<u>Feed</u>	<u>Weight</u>	<u>Radius</u>	<u>Part #</u>
2"	250	DR 9	3	7.13	P29LS90
	200	DR 11	2.0		P211LS90
	125	DR 17	2.0		P217LS90
3"	250	DR 9	5.0	10.5	P39LS90
	200	DR 11	4.0		P311LS90
	125	DR 17	3.0		P317LS90
4"	250	DR 9	8.0	13.5	P49LS90
	200	DR 11	7.0		P411LS90
	125	DR 17	6.0		P417LS90
6"	250	DR 9	24.0	19.9	P69LS90
	200	DR 11	20.0		P611LS90
	125	DR 17	14.0		P617LS90
8"	250	DR 9	50.0	24.5	P89LS90
	200	DR 11	44.0		P811LS90
	125	DR 17	19.0		P817LS90
10"	250	DR 9	101.0	32.25	P109LS90
	200	DR 11	85.0		P1011LS90
	125	DR 17	57.0		P1017LS90
12"	250	DR 9	165.0	38.3	P129LS90
	200	DR 11	138.0		P1211LS90
	125	DR 17	93.0		P1217LS90
14"	250	DR 9	202.0	38.9	P149LS90
	200	DR 11	169.0		P1411LS90
	125	DR 17	114.0		P1417LS90



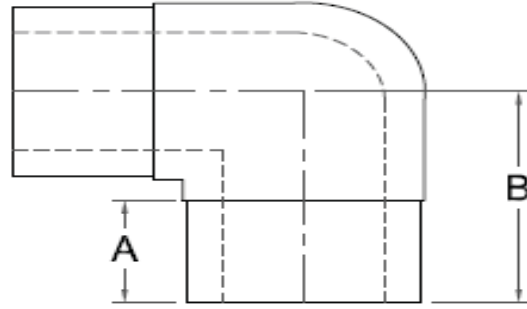
DIPS FAB 2 SEG. 22.5 ELBOW

<u>Nominal Size</u> <u>Actual OD</u>	<u>Pressure Class (psi)</u>	<u>Feed Stock</u>	<u>Dimension</u> <u>R x C x B (in)</u>	<u>Weight per Item (lbs)</u>	<u>Part #</u>
4" 4.800"	160	DR 11	14 1/4 X 5 X 5 1/2	2	PED11HB225PF2
	200	DR 9		3	PED9HB225PF2
	250	DR 7		4	PED7HB225PF2
6" 6.900"	160	DR 11	15 1/4 X 6 X 6 5/8	6	PED11HB225UF2
	200	DR 9		7	PED9HB225UF2
	250	DR 7		8	PED7HB225UF2
8" 9.050"	160	DR 11	16 1/4 X 6 1/2 X 7 3/8	10	PED11HB225XF2
	200	DR 9		12	PED9HB225XF2
	250	DR 7		17	PED7HB225XF2
10" 11.100"	100	DR 17	17 1/4 X 6 1/2 X 7 5/8	11	
	160	DR 11		17	PED11HB22510F2
	200	DR 9		20	PED9HB22510F2
	250	DR 7		26	
12" 13.200"	100	DR 17	19 1/2 X 8 X 9 1/4	19	PED17HB22512F2
	160	DR 11		28	PED11HB22512F2
	200	DR 9		34	PED9HB22512F2
	250	DR 7		45	PED7HB22512F2
14" 15.300"	100	DR 17	21 X 8 X 9 3/8	27	
	160	DR 11		41	PED11HB22514F2
	200	DR 9		49	
	250	DR 7		61	
16" 17.400"	100	DR 17	24 X 8 X 9 3/8	39	PED17HB22516F2
	160	DR 11		55	PED11HB22516F2
	200	DR 9		65	PED9HB22516F2
	250	DR 7		81	
18" 19.500"	100	DR 17	27 X 8 X 9 3/4	47	PED17HB22518F2
	160	DR 11		70	PED11HB22518F2
	200	DR 9		84	PED9HB22518F2
	250	DR 7		104	
20" 21.600"	100	DR 17	30 X 8 X 10	60	
	160	DR 11		88	PED11HB22520F2
	200	DR 9		105	PED9HB22520F2
	250	DR 7		130	
24" 25.800"	100	DR 17	36 X 14 X 16 3/8	138	PED17HB22524F2
	160	DR 11		206	PED11HB22524F2
	200	DR 9		246	PED9HB22524F2
	250	DR 7		304	



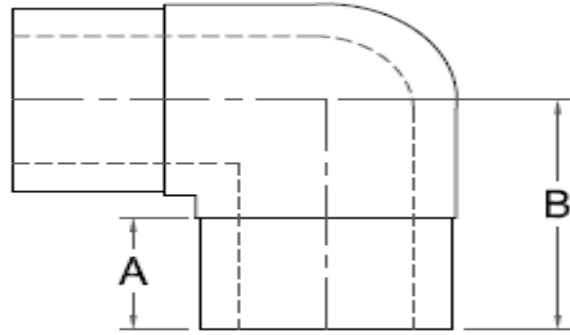
DIPS FAB 3 SEG. 90 ELBOW

<u>Nominal Size</u> <u>Actual OD</u>	<u>Pressure Class (psi)</u>	<u>Feed Stock</u>	<u>Dimension</u> <u>R x C x B (in)</u>	<u>Weight per</u> <u>Item (lbs)</u>	<u>Part #</u>
4" 4.80"	160	DR 11	6 X 5 1/2 X 10	6	PED11HB9PF3
	200	DR 9		7	PED9HB9PF3
	250	DR 7		7	PED7HB9PF3
6" 6.90	160	DR 11	9 1/2 X 6 X 13	13	PED11HB9UF3
	200	DR 9		16	PED9HB9UF3
	250	DR 7		16	PED7HB9UF3
8" 9.05"	160	DR 11	10 1/2 X 6 1/2 X 14 1/2	24	PED11HB9XF3
	200	DR 9		29	PED9HB9XF3
	250	DR 7		29	PED7HB9XF3
10" 11.10"	100	DR 17	12 3/4 X 6 1/2 X 18 1/4	26	PED17HB910F3
	160	DR 11		39	PED11HB910F3
	200	DR 9		47	PED9HB910F3
	250	DR 7		54	PED7HB910F3
12" 13.20"	100	DR 17	13 7/8 X 8 1/2 X 19 3/8	43	PED17HB912F3
	160	DR 11		64	PED11HB912F3
	200	DR 9		77	PED9HB912F3
	250	DR 7		82	
14" 15.30"	100	DR 17	14 7/8 X 8 1/2 X 20 3/8	54	PED17HB914F3
	160	DR 11		81	PED11HB914F3
	200	DR 9		97	PED9HB914F3
	250	DR 7		118	PED7HB914F3
16" 17.40"	100	DR 17	16 X 8 1/2 X 23	86	
	160	DR 11		128	PED11HB916F3
	200	DR 9		152	PED9HB916F3
	250	DR 7		169	
18" 19.50"	100	DR 17	17 X 8 1/2 X 24	117	PED17HB918F3
	160	DR 11		174	PED11HB918F3
	200	DR 9		207	PED9HB918F3
	250	DR 7		223	
20" 21.60"	100	DR 17	22 7/8 X 8 1/2 X 27 7/8	162	PED17HB920F3
	160	DR 11		241	PED11HB920F3
	200	DR 9		287	PED9HB920F3
	250	DR 7		312	
24" 25.80"	100	DR 17	25 X 8 1/2 X 30	262	PED17HB924F3
	160	DR 11		321	PED11HB924F3
	200	DR 9		383	PED9HB924F3
	250	DR 7		473	PED7HB924F3



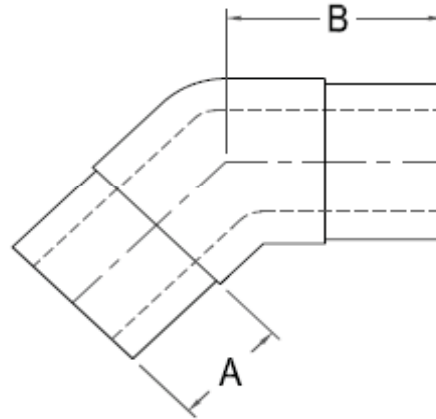
IPS MOLDED 90

<u>Nominal Size</u>	<u>DR/Wall</u>	<u>Dimensions A x B (in)</u>	<u>Package Weight (lbs)</u>	<u>Part #</u>
3/4"	DR 11	2.63 X 4	0.9	PEI11AB9F
1"	DR 9	2.63 X 4	1.3	
	DR11			PEI11AB9G
1-1/4"	DR 9	2.63 X 4	3.2	
	DR 10	2.63 X 4		
	DR 11			PEI11AB9H
1-1/2"	DR 9	2.63 X 4	5	PEI9AB9J
	DR 11			PEI11AB9J
2"	DR 7	2.81 X 4.5	10.8	
	DR 9		9.3	PEI9AB9K
	DR 11		7.6	PEI11AB9K
	DR17		7.6	
3"	DR 7	3.00 X 5.13	11.7	PEI7AB9M
	DR 9			PEI9AB9M
	DR 11/ 11.5	3.00 X 5.13	7.3	PEI11AB9M
	DR 13.5			
	DR 17			PEI17AB9M
4"	DR 7	3.00 X 5.75	16.2	PEI7AB9P
	DR 9			PEI9AB9P
	DR 11/11.5		16.3	PEI11AB9P
	DR 13.5			
	DR 17			PEI17AB9P
6"	DR 7	4.38 X 9	27.2	PEI7AB9U
	DR 9		26.8	PEI9AB9U
	DR 11/11.5		17.3	PEI11AB9U
	DR 13.5		16.6	
	DR 17			PEI17AB9U
8"	DR 7	6.00 X 12	26.5	PEI7AB9X
	DR 9			PEI9AB9X
	DR 11		20.2	PEI11AB9X
	DR 13.5			
	DR 17			PEI17AB9X
10"	DR17	6.00 X 13.25	37.5	PEI17AB910
	DR11			PEI11AB910
12"	DR17	7.50 X 15.88	67	PEI17AB912
	DR11			PEI11AB912



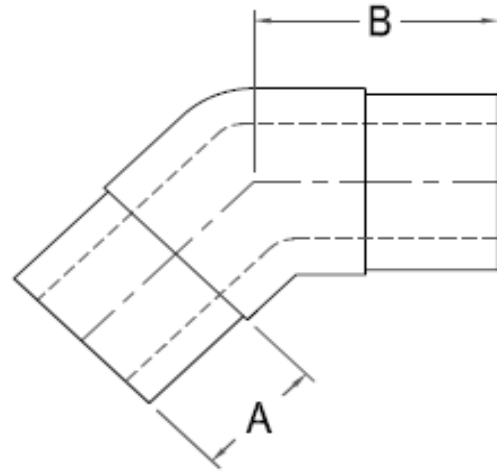
DIPS 90 ELL

Nominal Size Actual OD	Pressure Class (psi)	SDR	Dimensions Ax B (in)	Standard Item	Weight per Item (lbs.)	PART #
4" 4.80"	160	11	4.10 X 7.82	Y	4	PED11AB9P
6" 6.90"	160	11	5.10 x 9.67	Y	11	PED11AB9U
8" 9.05"	160	11	5.17 x 11.58	Y	20	PED11AB9X
10" 11.10"	160	11	6.00 x 13.25	Y	39	
12" 13.20"	160	11	7.50 x 15.88	Y	63	



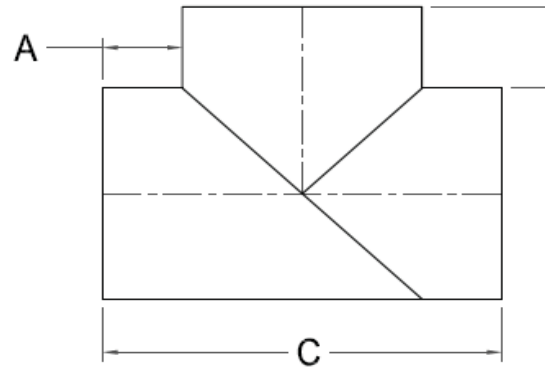
IPS MOLDED 45

<u>Nominal Size</u>	<u>DR/Wall</u>	<u>Dimensions A x B (in)</u>	<u>Package Weight (lbs)</u>	<u>Part #</u>
2"	DR 7	2.45 x 3.20	1.33	PEI7AB4K
	DR 9		1.25	PEI9AB4K
	DR 11		1.18	PEI11AB4K
	DR17		1	
3"	DR 7	3.00 x 5.00	1.57	PEI7AB9M
	DR 9		1.62	PEI9AB4M
	DR 11/ 11.5		1.8	PEI11AB4M
	DR 13.5			
	DR 17		PEI17AB4M	
4"	DR 7	3.00 x 5.00	3.03	PEI7AB4P
	DR 9			PEI9AB4P
	DR 11/11.5	3.00 x 5.00	2.9	PEI11AB4P
	DR 13.5			
	DR 17			PEI17AB4P
6"	DR 7	4.38 x 7.00	11.74	PEI7AB4U
	DR 9		7.14	PEI9AB4U
	DR 11/11.5		7.09	PEI11AB4U
	DR 13.5			
	DR 17		PEI17AB4U	
8"	DR 7	6.00 x 11.00	19.9	PEI7AB4X
	DR 9			PEI9AB4X
	DR 11		20.9	PEI11AB4X
	DR 13.5		19.60	
	DR 17			PEI17AB4X
10"	DR17	6.00 x 13.25	38	PEI17AB410
	DR11		41.5	PEI11AB410
12"	DR17	7.50 x 15.75	60	PEI17AB412
	DR11		64	PEI11AB412



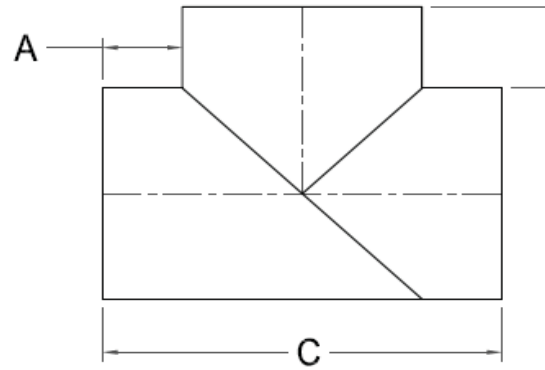
MOLDED DIPS 45 ELL

Nominal Size Actual OD	Pressure Class (psi)	SDR	Dimensions	Standard Item	Weight per	PART #
			A X B		Item (lbs.)	
4" 4.80"	160	11	4.10 X 6.05	Y	3.45	PED11AB4P
6" 6.90"	160	11	5.10 X 7.16	Y	8.88	PED11AB4U
8" 9.05"	160	11	5.17 X 8.32	Y	14.60	PED11AB4X



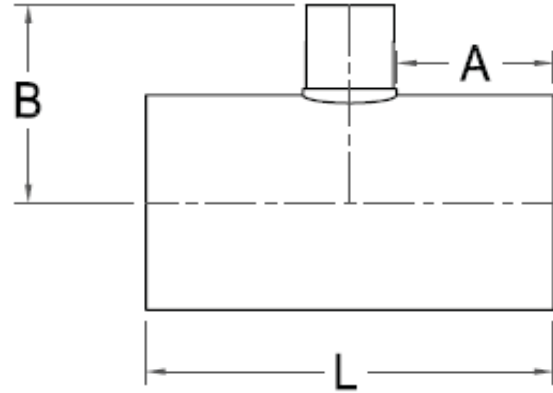
IPS FAB TEE

<u>Nominal Size</u> <u>Actual OD</u>	<u>Pressure Class (psi)</u>	<u>Feed Stock</u>	<u>Dimension</u> <u>A x C xE (in)</u>	<u>Weight per Item (lbs)</u>	<u>Part #</u>
4" 4.500"	100	DR 17	6 x 16-1/2 x 6	5	PEI17HBTPF
	160	DR 11		6	PEI11HBTPF
	200	DR 9		7	PEI9HBTPF
6" 6.625"	100	DR 17	6 x 16-5/8 x 6	12	PEI17HBTUF
	160	DR 11		14	PEI11HBTUF
	200	DR 9		18	PEI9HBTUF
8" 8.625"	100	DR 17	8 x 24-5/8 x 8	20	PEI17HBTXF
	160	DR 11		28	PEI11HBTXF
	200	DR 9		34	PEI9HBTXF
10" 10.750"	100	DR 17	8 x 26-3/4 x 8	22	PEI17HBT10F
	160	DR 11		32	PEI11HBT10F
	200	DR 9		38	PEI9HBT10F
	250	DR 7		48	PEI7HBT10F
12" 12.750"	100	DR 17	8 x 28-3/4 x 8	37	PEI17HBT12F
	160	DR 11		55	PEI11HBT12F
	200	DR 9		66	PEI9HBT12F
	250	DR 7		82	PEI7HBT12F
14" 14.000"	100	DR 17	9 x 32 x 9	46	PEI17HBT14F
	160	DR 11		69	PEI11HBT14F
	200	DR 9		82	PEI9HBT14F
	250	DR 7		102	PEI7HBT14F
16" 16.000"	100	DR 17	9 x 34 x 9	76	PEI17HBT16F
	160	DR 11		113	PEI11HBT16F
	200	DR 9		135	PEI9HBT16F
	250	DR 7		167	PEI7HBT16F
18" 18.000"	100	DR 17	10 x 38 x 10	100	PEI17HBT18F
	160	DR 11		149	PEI11HBT18F
	200	DR 9		178	PEI9HBT18F
	250	DR 7		221	PEI7HBT18F
20" 20.000"	100	DR 17	10 x 40 x 10	140	PEI17HBT20F
	160	DR 11		209	PEI11BT20F
	200	DR 9		249	PEI9HBT20F
	250	DR 7		309	PEI7HBT20F



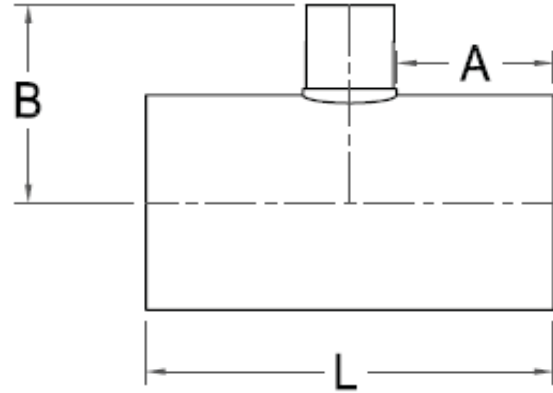
IPS FAB TEE

<u>Nominal Size</u> <u>Actual OD</u>	<u>Pressure Class (psi)</u>	<u>Feed Stock</u>	<u>Dimension</u> <u>A x C xE (in)</u>	<u>Weight per</u> <u>Item (lbs)</u>	<u>Part #</u>
22" 22.000"	100	DR 17	12 x 46 x 12	178	
	160	DR 11		262	PEI11HBT22F
	200	DR 9		312	PEI9HBT22F
	250	DR 7		390	
24" 24.000"	100	DR 17	12 x 48 x 12	216	PEI17HBT24F
	160	DR 11		322	PEI11HBT24F
	200	DR 9		385	PEI9HBT24F
	250	DR 7		481	PEI7HBT24F
28" 28.000"	100	DR 17	18 x 56 x 18	403	PEI17HBT28F
	160	DR 11		655	PEI11HBT28F
	200	DR 9		806	PEI9HBT28F
30" 30.000"	100	DR 17	18 x 58 x 18	475	PEI17HBT30F
	160	DR 11		772	PEI11HBT30F
	200	DR 9		950	PEI9HBT30F
32" 32.000"	100	DR 17	18 x 60 x 18	799	PEI17HBT32F
	160	DR 11		1300	PEI11HBT32F
36" 36.000"	100	DR 17	20 x 76 x 33	1242	PEI17HBT36F
	160	DR 11		2018	PEI11HBT36F
42" 42.000"	70	DR 21	20 x 82 x 33	1440	PEI21HBT42F
	90	DR 17		1772	PEI17HBT42F
48" 48.000"	70	DR 21	20 x 88 x 33	1953	PEI21HBT48F
	90	DR 17		2404	PEI17HBT48F
54" 54.000"	55	DR 26	20 x 94 x 33	1844	PEI26HBT54F
	70	DR 21		2259	PEI21HBT54F



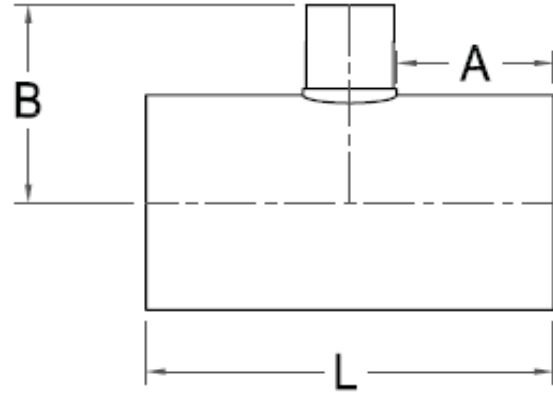
IPS FAB BRANCH SADDLE RED. TEE

Nominal Size	Pressure Class (psi)	Feed Stock	Dimension A x B x L (in)	Weight per Item (lbs)	Part #
4" X 4" X 2"	125	DR 17	6 x 9 x 15	8	PEI17HBTPKF
	200	DR 11		8	PEI11HBTPKF
	250	DR 9		9	PEI9HBTPKF
6" X 6" X 2"	125	DR 17	6 x 10 x 15	11	PEI17HBTUKF
	200	DR 11		11	PEI11HBTUKF
	250	DR 9		13	PEI9HBTUKF
8" X 8" X 2"	125	DR 17	6-1/2 x 11 x 16	16	PEI17HBTXKF
	200	DR 11		16	PEI11HBTXKF
	250	DR 9		19	PEI9HBTXKF
10" X 10" X 2"	125	DR 17	6-1/2 x 12 x 16	23	PEI17HBT10KF
	200	DR 11		23	PEI11HBT10KF
	250	DR 9		27	PEI9HBT10KF
12" X 12" X 2"	125	DR 17	8 x 13 x 19	24	PEI17HBT12KF
	200	DR 11		35	PEI11HBT12KF
	250	DR 9		41	PEI9HBT12KF
4" X 4" X 3"	125	DR 17	6 x 10 x 16	15	PEI17HBTPMF
	200	DR 11		15	PEI11HBTPMF
	250	DR 9		17	PEI9HBTPMF
6" X 6" X 3"	125	DR 17	6 x 11 x 16	15	PEI17HBTUMF
	200	DR 11		15	PEI11HBTUMF
	250	DR 9		17	PEI9HBTUMF
8" X 8" X 3"	125	DR 17	6-1/2 x 12 x 17	20	PEI17HBTXMF
	200	DR 11		20	PEI11HBTXMF
	250	DR 9		23	PEI9HBTXMF
10 X 10" X 3"	125	DR 17	6-1/2 x 13 x 17	27	PEI17HBT10MF
	200	DR 11		27	PEI11HBT10MF
	250	DR 9		31	PEI9HBT10MF
12" X 12" X 3"	125	DR 17	8 x 14 x 20	28	PEI17HBT12MF
	200	DR 11		39	PEI11HBT12MF
	250	DR 9		46	PEI9HBT12MF
14" X 14" X 3"	125	DR 17	8 x 15 x 20	32	PEI17HBT14MF
	200	DR 11		46	PEI11HBT14MF
	250	DR 9		54	
16" X 16" X 3"	125	DR 17	8 x 16 x 20	40	PEI17HBT16MF
	200	DR 11		58	PEI11HBT16MF
	250	DR 9		68	
18" X 18" X 3"	125	DR 17	8 x 17 x 20	49	PEI17HBT18MF
	200	DR 11		71	PEI11HBT18MF
	250	DR 9		84	



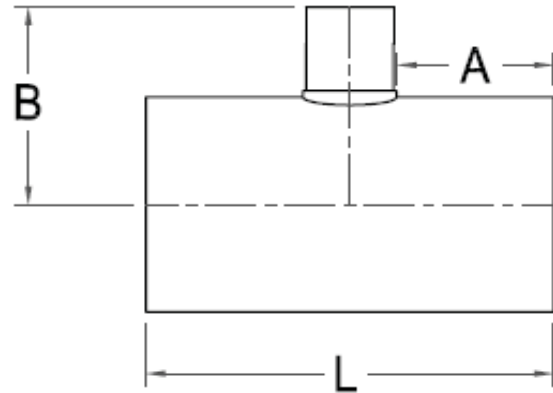
IPS FAB BRANCH SADDLE RED. TEE

Nominal Size	Pressure Class (psi)	Feed Stock	Dimension A x B x L (in)	Weight per Item (lbs)	Part #
20" X 20" X 3"	125	DR 17	8 x 18 x 20	59	PEI17HBT20MF
	200	DR 11		86	PEI11HBT20MF
	250	DR 9		101	PEI9HBT20MF
24" X 24" X 3"	125	DR 17	8 x 20 x 20	82	PEI17HBT24MF
	200	DR 11		120	PEI11HBT24MF
	250	DR 9		142	
6" X 6" X 4"	125	DR 17	6 x 11 x 17	26	PEI17HBTUPF
	200	DR 11		26	PEI11HTUPF
	250	DR 9		28	PEI9HBTUPF
8" X 8" X 4"	125	DR 17	6-1/2 x 12 x 18	32	PEI17HBTXPF
	200	DR 11		32	PEI11HBTXPF
	250	DR 9		35	PEI9HBTXPF
10" X 10" X 4"	125	DR 17	6-1/2 x 13 x 18	39	PEI17HBT10PF
	200	DR 11		39	PEI11HBT10PF
	250	DR 9		45	PEI9HBT10PF
12" X 12" X 4"	125	DR 17	8 x 14 x 21	39	PEI17HBT12PF
	200	DR 11		53	PEI11HBT12PF
	250	DR 9		61	PEI9HBT12PF
14" X 14" X 4"	125	DR 17	8 x 15 x 21	45	PEI17HBT14PF
	200	DR 11		60	PEI11HBT14PF
	250	DR 9		69	PEI9HBT14PF
16" X 16" X 4"	125	DR 17	8 x 16 x 21	53	PEI17HBT16PF
	200	DR 11		73	PEI11HBT16PF
	250	DR 9		85	PEI9HBT16PF
18" X 18" X 4"	125	DR 17	8 x 17 x 21	63	PEI17HBT18PF
	200	DR 11		88	PEI11HBT18PF
	250	DR 9		102	
20" X 20" X 4"	125	DR 17	8 x 18 x 21	74	PEI17HBT20PF
	200	DR 11		104	PEI11HBT20PF
	250	DR 9		121	PEI9HBT20PF
24" X 24" X 4"	125	DR 17	8 x 20 x 21	99	PEI17HBT24PF
	200	DR 11		141	PEI11HBT24PF
	250	DR 9		166	PEI9HBT24PF
8" X 8" X 6"	125	DR 17	6-1/2 x 14 x 20	39	PEI17HBTXUF
	200	DR 11		39	PEI11HBTXUF
	250	DR 9		45	PEI9HBTXUF
10" X 10" X 6"	125	DR 17	6-1/2 x 15 x 20	39	PEI17HBT10UF
	200	DR 11		39	PEI11HBT10UF
	250	DR 9		45	PEI9HBT10UF



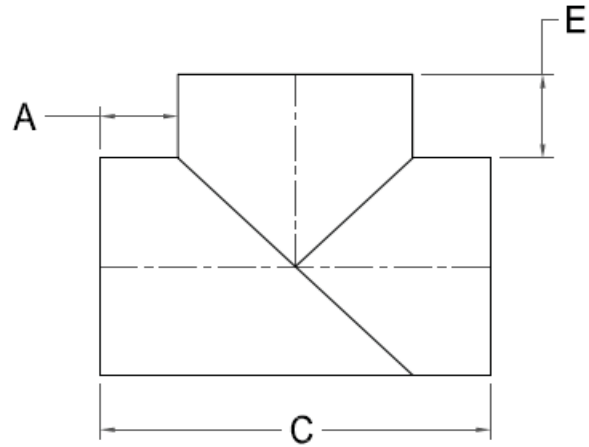
IPS FAB BRANCH SADDLE RED. TEE

Nominal Size	Pressure Class (psi)	Feed Stock	Dimension A x B x L (in)	Weight per Item (lbs)	Part #
12" X 12" X 6"	125	DR 17	8 x 16 x 23	39	PEI17HBT12UF
	200	DR 11		53	PEI11HBT12UF
	250	DR 9		61	PEI9HBT12UF
14" X 14" X 6"	125	DR 17	8 x 17 x 23	45	PEI17HBT14UF
	200	DR 11		60	PEI11HBT14UF
	250	DR 9		69	PEI9HBT14UF
16" X 16" X 6"	125	DR 17	8 x 18 x 23	53	PEI17HBT16UF
	200	DR 11		73	PEI11HBT16UF
	250	DR 9		85	PEI9HBT16UF
18" X 18" X 6"	125	DR 17	8 x 19 x 23	71	PEI17HBT18UF
	200	DR 11		99	PEI11HBT18UF
	250	DR 9		117	
20" X 20" X 6"	125	DR 17	8 x 20 x 23	83	PEI17HBT20UF
	200	DR 11		118	PEI11HBT20UF
	250	DR 9		138	PEI9HBT20UF
24" X 24" X 6"	125	DR 17	8 x 22 x 23	111	PEI17HBT24UF
	200	DR 11		159	PEI11HBT24UF
	250	DR 9		188	PEI9HBT24UF
10" X 10" X 8"	125	DR 17	6-1/2 x 16 x 22	69	PEI17HBT10XF
	200	DR 11		89	PEI11HBT10XF
	250	DR 9		100	PEI9HBT10XF
12" X 12" X 8"	125	DR 17	8 x 17 x 25	69	PEI17HBT12XF
	200	DR 11		89	PEI11HBT12XF
	250	DR 9		100	PEI9HBT12XF
14" X 14" X 8"	125	DR 17	8 x 18 x 25	75	PEI17HBT14XF
	200	DR 11		97	PEI11HBT14XF
	250	DR 9		11	PEI9HBT14XF
16" X 16" X 8"	125	DR 17	8 x 19 x 25	85	PEI17HBT16XF
	200	DR 11		113	PEI11HBT16XF
	250	DR 9		129	PEI9HBT16XF
18" X 18" X 8"	125	DR 17	8 x 20 x 25	97	PEI17HBT18XF
	200	DR 11		129	PEI11HBT18XF
	250	DR 9		149	PEI9HBT18XF
20" X 20" X 8"	125	DR 17	8 x 21 x 25	110	PEI17HBT20XF
	200	DR 11		149	PEI11HBT20XF
	250	DR 9		172	PEI9HBT20XF
24" X 24" X 8"	125	DR 17	8 x 23 x 25	139	PEI17HBT24XF
	200	DR 11		194	PEI11HBT24XF
	250	DR 9		225	PEI9HBT24XF



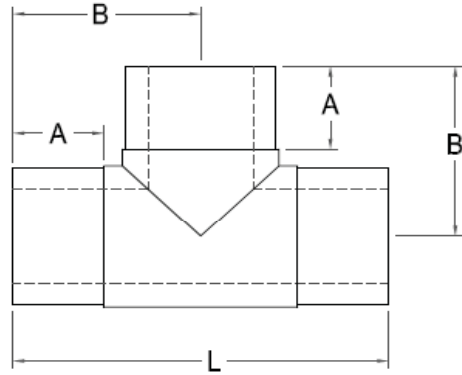
IPS FAB BRANCH SADDLE RED. TEE

Nominal Size	Pressure Class (psi)	Feed Stock	Dimension A x B x L (in)	Weight per Item (lbs)	Part #
12" X 12" X 10"	125	DR 17	8 x 17 x 27	95	PEI17HBT1210F
	200	DR 11		22	PEI11HBT1210F
	250	DR 9		138	PEI9HBT1210F
14" X 14" X 10"	125	DR 17	8 x 18 x 27	95	PEI17HBT1410F
	200	DR 11		22	PEI11HBT1410F
	250	DR 9		138	PEI9HBT1410F
16" X 16" X 10"	125	DR 17	8 x 19 x 27	106	PEI17HBT1610F
	200	DR 11		139	PEI11HBT1610F
	250	DR 9		158	PEI9HBT1610F
18" X 18" X 10"	125	DR 17	8 x 20 x 27	119	PEI17HBT1810F
	200	DR 11		157	PEI11HBT1810F
	250	DR 9		180	PEI9HBT1810F
20" X 20" X 10"	125	DR 17	8 x 21 x 27	133	PEI17HBT2010F
	200	DR 11		178	PEI11HBT2010F
	250	DR 9		205	PEI9HBT2010F
24" X 24" X 10"	125	DR 17	8 x 23 x 27	165	PEI17HBT2410F
	200	DR 11		226	PEI11HBT2410F
	250	DR 9		262	PEI9HBT2410F
14" X 14" X 12"	125	DR 17	8 x 20 x 29	120	PEI17HBT1412F
	200	DR 11		158	PEI11HBT1412F
	250	DR 9		181	PEI9HBT1412F
16" X 16" X 12"	125	DR 17	8 x 20 x 29	120	PEI17HBT1612F
	200	DR 11		158	PEI11HBT1612F
	250	DR 9		181	PEI9HBT1612F
18" X 18" X 12"	125	DR 17	8 x 21 x 29	134	PEI17HBT1812F
	200	DR 11		178	PEI11HBT1812F
	250	DR 9		208	PEI9HBT1812F
20" X 20" X 12"	125	DR 17	8 x 22 x 29	148	PEI17HBT2012F
	200	DR 11		199	PEI11HBT2012F
	250	DR 9		230	PEI9HBT2012F
24" X 24" X 12"	125	DR 17	8 x 24 x 29	182	PEI17HBT2412F
	200	DR 11		251	PEI11HBT2412F
	250	DR 9		291	PEI9HBT2412F



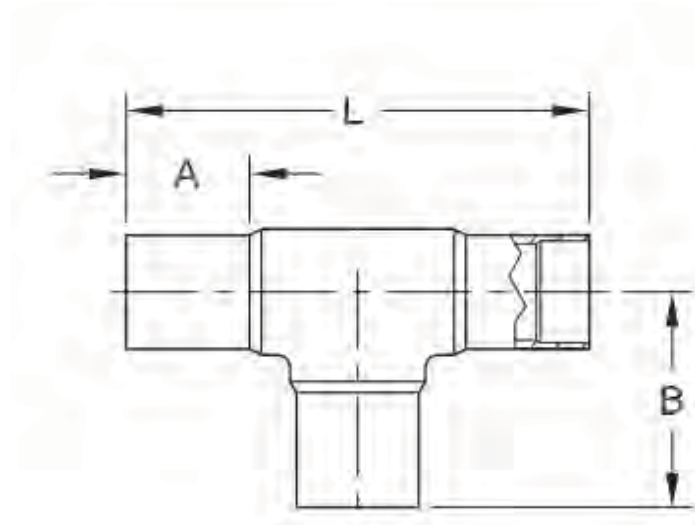
DIPS FAB TEE

<u>Nominal Size</u> <u>Actual OD</u>	<u>Pressure</u> <u>Class (psi)</u>	<u>Feed</u> <u>Stock</u>	<u>Dimension</u> <u>A x C x E (in)</u>	<u>Weight</u> <u>per</u> <u>Item (lbs)</u>	<u>Part #</u>
4" 4.800"	100	DR 17	6 X 16.8 X 6	7	PED11HBTPF
	160	DR 11		9	PED9HBTPF
	200	DR 9			
	250	DR 7		11	
6" 6.900"	100	DR 17	6 X 18.9 X 6		PED17HBTUF
	160	DR 11		15	PED11HBTUF
	200	DR 9		18	PED9HBTUF
	250	DR 7		23	
8" 9.050"	100	DR 17	8 X 25 X 8		PED17HBTXF
	160	DR 11		31	PED11HBTXF
	200	DR 9		37	PED9HBTXF
	250	DR 7		46	PED7HBTXF
10" 11.100"	100	DR 17	8 X 27.1 X 8	35	PED17HBT10F
	160	DR 11		52	PED11HBT10F
	200	DR 9		62	PED9HBT10F
	250	DR 7		76	PED7HBT10F
12" 13.200"	100	DR 17	8 X 29.2 X 8	59	PED17HBT12F
	160	DR 11		88	PED11HBT12F
	200	DR 9		105	PED9HBT12F
	250	DR 7		129	PED7HBT12F
14" 15.300"	100	DR 17	9 X 33.3 X 9	86	PED17HBT14F
	160	DR 11		128	PED11HBT14F
	200	DR 9		153	PED9HBT14F
	250	DR 7		189	
16" 17.400"	100	DR 17	9 X 33.3 X 9	119	PED17HBT16F
	160	DR 11		178	PED11HBT16F
	200	DR 9		212	PED9HBT16F
	250	DR 7		262	PED7HBT16F
18" 19.50"	100	DR 17	10 X 39.5 X 10	100	PED17HBT18F
	160	DR 11		260	PED11HBT18F
	200	DR 9		310	PED9HBT18F
	250	DR 7		384	
20" 21.60"	100	DR 17	10 X 41.6 X 10	226	PED17HBT20F
	160	DR 11		336	PED11HBT20F
	200	DR 9		402	PED9HBT20F
	250	DR 7		498	
24" 25.80"	100	DR 17	12 X 49.8 X 12	564	PED17HBT24F
	160	DR 11		840	PED11HBT24F
	200	DR 9		1003	PED9HBT24F
	250	DR 7		1240	



IPS MOLDED TEE

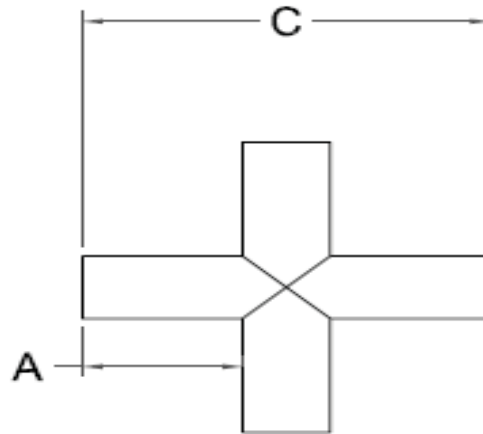
<u>Nominal Size</u>	<u>DR/Wall</u>	<u>Dimensions A x B x L (in)</u>	<u>Package Weight (lbs)</u>	<u>Part #</u>
3/4"	DR 11	1.72 x 2.94 x 5.88	1.2	PEI11ABTF
1"	DR 9	1.75 X 3.19 X 6.38	1.8	
	DR11			PEI11ABTG
1-1/4"	DR 9	1.88 X 3.38 X 6.76	4.4	
	DR 10		5.2	
	DR 11			PEI11ABTH
1-1/2"	DR 11	2.30 X 4.25 X 8.50	6.6	PEI11ABTJ
	DR 9			PEI9ABTJ
2"	DR 7	2.54 X 4.61 X 9.28	14	PEI7ABTK
	DR 9		11.8	PEI9ABTK
	DR 11		10.4	PEI11ABTK
	DR17		10	
3"	DR 7	2.90 X 5.13 X 10.26	15.3	PEI7ABTM
	DR 9		14.9	PEI9ABTM
	DR 11/ 11.5		10.4	PEI11ABTM
	DR 13.5			
	DR 17			PEI17ABTM
4"	DR 7	2.90 X 5.60 X 11.20	23	PEI7ABTP
	DR 9		22	PEI9ABTP
	DR 11/11.5		21	PEI11ABTP
	DR 13.5		20	
	DR 17		19.9	PEI17ABTP
6"	DR 7	4.38 X 9.00 X 18	16.7	PEI7ABTU
	DR 9			PEI9ABTU
	DR 11/11.5		11.6	PEI11ABTU
	DR 13.5			
	DR 17			PEI17ABTU
8"	DR 7	6.00 X 12.00 X 24.00	37.6	PEI7ABTX
	DR 9		36.6	PEI9ABTX
	DR 11		27.5	PEI11ABTX
	DR 13.5		26.3	
	DR 17			PEI17ABTX
10"	DR17	6.00 X 13.25 X 26.5	52	PEI17ABT10
	DR11			PEI11ABT10
12"	DR17	7.50 X 15.88 X 26.5	81.5	PEI17ABT12
	DR11			PEI11ABT12



DIPS TEE

Butt Tee	DR/Wall	Dimensions	Package	PART #
		A X B X L	Weight (lbs.)	
4"	SDR 11	4.10 x 7.85 x 15.63	06.2	PED11ABTP
6"	SDR 11	5.10 x 9.67 x 19.34	18.0	PED11ABTU
8"	SDR 11	5.17 x 11.58 x 23.15	30.0	PED11ABTX
10"	SDR 11	6.10 x 13.25 x 26.50	54.0	
12"	SDR 11	7.50 x 15.88 x 31.76	88.0	

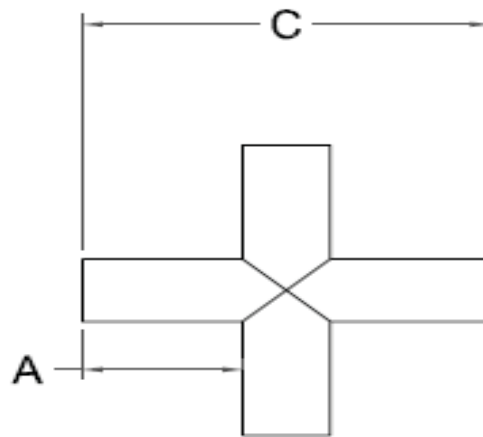
IPS FAB CROSS



<u>Nominal Size</u>	<u>Pressure class (psi)</u>	<u>Feed Stock</u>	<u>Dimensions A x C (in)</u>	<u>Weight per Item (lbs)</u>	<u>Part #</u>
2"	160	DR 11	3-15/16 x 10-1/4	3	PEI11HBXKF
3"	160	DR 11	4 x 11-7/16	4	PEI11HBXMF
4"	160	DR 11	4-1/2 x 13-1/2	4	PEI11HBXPF
	200	DR 9		6	PEI9HBXPF
6"	160	DR 11	5 x 16-5/8	12	PEI11HBXUF
	200	DR 9		17	PEI9HBXUF
8"	160	DR 11	7-3/4 x 24-3/16	29	PEI11HBXXF
	200	DR 9		42	PEI9HBXXF
10"	100	DR 17	6-1/2 x 23-3/4	31	PEI17HBC10F
	160	DR 11		42	PEI11HBC10F
	200	DR 9		62	PEI9HBC10F
12"	100	DR 17	8 x 27-3/4	50	PEI17HBC12F
	160	DR 11		69	PEI11HBC12F
	200	DR 9		98	PEI9HBC12F
14"	100	D 17	8 x 30	62	PEI17HBC14F
	160	DR 11		85	PEI11HBC14F
	200	DR 9		121	
16"	100	DR 17	8 x 32	85	PEI17HBC16F
	160	DR 11		116	PEI11HBC16F
	200	DR 9		166	
18"	100	DR17	14 x 46	165	PEI17HBC18F
	160	DR 11		226	PEI11HBC18F
	200	DR 9		322	PEI9HBC18F
20"	100	DR 17	14 x 48	210	PEI17HBC20F
	160	DR 11		288	PEI11HBC20F
	200	DR 9		409	PEI9HBC20F
22"	100	DR 17	14 x 50	287	
	160	DR 11		393	
	200	DR 9		559	

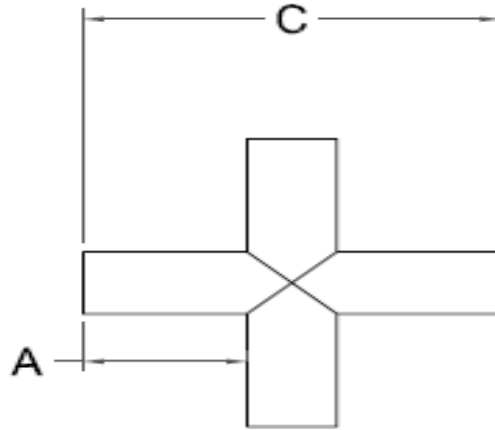
Dimensions and weights are approximate and subject to change

IPS FAB CROSS



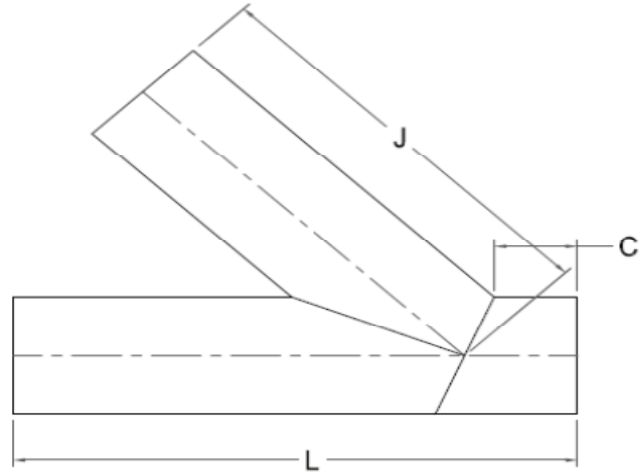
<u>Nominal Size</u>	<u>Pressure class (psi)</u>	<u>Feed Stock</u>	<u>Dimensions A x C (in)</u>	<u>Weight per Item (lbs)</u>	<u>Part #</u>
24"	100	DR 17	14 x 52	316	PEI11HBC24F
	160	DR 11		433	
	200	DR 9		620	
28"	100	DR 17	14 x 56	316	
	160	DR 11		433	
	200	DR 9		620	
30"	100	DR 17	14 x 58	316	
	160	DR 11		433	
32"	100	DR 17	14 x 60	316	
	160	DR 11		433	
36"	100	DR 17	20 X 76	316	PEI17HBC36F
	160	DR 11		433	

DIPS FAB CROSS

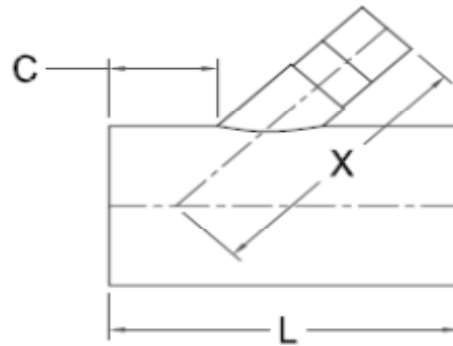


<u>Nominal Size</u>	<u>Pressure class (psi)</u>	<u>Feed Stock</u>	<u>Dimensions A x C (in)</u>	<u>Weight per Item (lbs)</u>	<u>Part #</u>
4"	160	DR 11	4 X 12 3/4	10	PED11HBCPF
	200	DR 9		15	PED9HBCPF
6"	160	DR 11	6 X 18 7/8	21	PED11HBCUF
	200	DR 9		31	PED9HBCUF
8"	160	DR 11	6 1/2 X 22	42	PED11HBCXF
	200	DR 9		62	PED9HBCXF
10"	160	DR 11	8 X 27 1/8	69	PED11HBC10F
	200	DR 9		102	
12"	160	DR 11	8 X 29 1/4	123	PED11HBC12F
	200	DR 9		182	PED9HBC12F
14"	160	DR 11	8 X 31 1/4	170	PED11HBC14F
	200	DR 9		252	
16"	160	DR 11	14 X 45 3/8	232	
	200	DR 9		343	
18"	160	DR 11	14 X 47 1/2	307	
	200	DR 9		453	
20"	160	DR 11	14 X 49 5/8	405	
	200	DR 9		597	
24"	160	DR 11	14 X 53 3/4	644	
	200	DR 9		950	
30"	128	DR 11		1098	

IPS FAB LATERAL



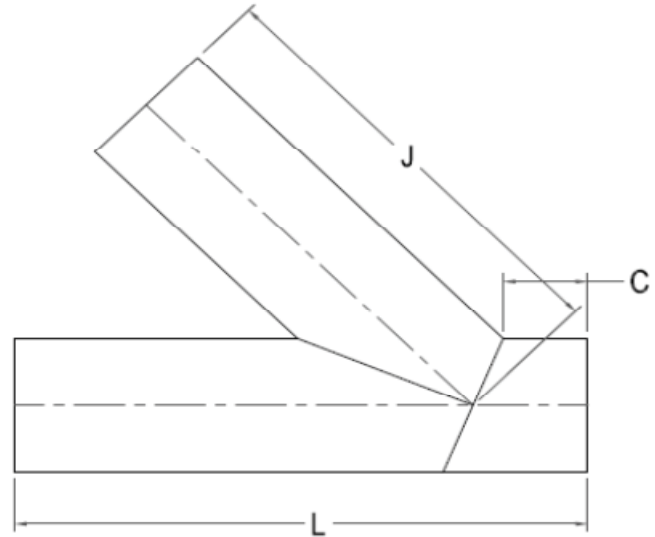
<u>Nominal Size</u> <u>Actual OD</u>	<u>Pressure Class (psi)</u>	<u>Feed Stock</u>	<u>Dimensions</u> <u>L x C x J (in)</u>	<u>Weight per Item (lbs)</u>	<u>Part #</u>
2" 2.375"	100	DR 11	21 x 4 x 16-7/8	2	PEI11HBYKF
	126	DR 9		3	PEI9HBYKF
3" 3.500"	100	DR 11	23 x 4 x 18-1/4	4	PEI11HBYMF
	126	DR 9		5	PEI9HBYMF
4" 4.500"	63	DR 17	24-3/8 x 4 x 19-1/2	7	PEI17HBYPF
	100	DR 11		8	PEI11HBYPF
	126	DR 9		10	PEI9HBYPF
6" 6.625"	63	DR 17	31-3/8 x 6 x 24	19	PEI17HBYUF
	100	DR 11		21	PEI11HBYUF
	126	DR 9		28	PEI9HBYUF
8" 8.625"	63	DR 17	36-1/4 x 8 x 26-3/8	40	PEI17HBYXF
	100	DR 11		45	PEI11HBYXF
	126	DR 9		54	PEI9HBYXF
10" 10.75"	63	DR 17	41-1/4 x 8 x 31	55	PEI17HBY10F
	100	DR 11		81	PEI11HBY10F
	126	DR 9		97	PEI9HBY10F
12" 12.75"	63	DR 17	44 x 8 x 33-3/8	82	PEI17HBY12F
	100	DR 11		122	PEI11HBY12F
	126	DR 9		146	PEI9HBY12F
14" 14.000"	63	DR 17	55 x 8 x 43-7/8	111	PEI17HBY14F
	126	DR 11		165	PEI11HBY14F
	126	DR 9		197	PEI9HBY14F
16" 16.00"	63	DR 17	70 x 10-1/2 x 55-3/4	160	PEI17HBY16F
	100	DR 11		239	PEI11HBY16F
	126	DR 9			PEI9HBY16F
18" 18.00"	63	DR 17	71 x 10-1/2 x 57-1/4	215	PEI17HBY18F
	100	DR 11		320	PEI11HBY18F
	126	DR 9			PEI9HBY18F
20" 20.00"	63	DR 17	78 x 12 x 62	325	PEI17HBY20F
	100	DR 11		485	PEI11HBY20F
	126	DR 9			PEI9HBY20F
22" 22.00"	63	DR 17	80 x 12 x 63-1/2	411	
	100	DR 11		613	PEI11HBY22F
	126	DR 9			
24" 24.00"	63	DR 17	82 x 12 x 65	510	PEI17HBY24F
	100	DR 11		760	PEI11HBY24F
	126	DR 9			PEI9HBY24F



IPS FAB REDUCING LATERAL

<u>Nominal Size</u> Actual OD	<u>Pressure</u> Class (psi)	<u>Feed</u> Stock	<u>Dimensions</u> L x X x C (in)	<u>Weight per</u> Item (lbs)	<u>Part #</u>
6" x 6" x 4"	100	DR 11	25-3/4 x 19-1/8 x 6	26	PEI11HBYUPF
8" x 8" x 4"	100	DR 11	30-5/8 x 23-3/8 x 7-5/8	32	PEI11HBYXPF
10" x 10" x 4"	100	DR 11	30-5/8 x 24-1/2 x 7-5/8	39	PEI11HBY10PF
12" x 12" x 4"	100	DR 11	30-5/8 x 25-1/2 x 7-5/8	53	PEI11HBY12PF
14" x 14" x 4"	100	DR 11	31-3/4 x 26-7/8 x 8	60	
16" x 16" x 4"	100	DR 11	31-3/4 x 27-7/8 x 8	73	
18" x 18" x 4"	100	DR 11	31-3/4 x 28-7/8 x 8	88	PEI11HBY18PF
20" x 20" x 4"	100	DR 11	43-3/4 x 37-7/8 x 12	104	
22" x 22" x 4"	100	DR 11	43-3/4 x 38-7/8 x 12	122	
24" x 24" x 4"	100	DR 11	43-3/4 x 39-7/8 x 12	141	
8" x 8" x 6"	100	DR 11	34-1/4 x 25-1/4 x 7-5/8	40	PEI11HBYXUF
10" x 10" x 6"	100	DR 11	34-1/4 x 26-1/4 x 7-5/8	47	PEI11HBY10UF
12" x 12" x 6"	100	DR 11	34-1/4 x 27-1/4 x 7-5/8	61	PEI11HBY12UF
14" x 14" x 6"	100	DR 11	35-3/8 x 28-5/8 x 8	69	PEI11HBY14UF
16" x 16" x 6"	100	DR 11	35-3/8 x 29-5/8 x 8	83	PEI11HBY16UF
18" x 18" x 6"	100	DR 11	35-3/8 x 30-5/8 x 8	99	PEI11HBY18UF
20" x 20" x 6"	100	DR 11	47-3/8 x 39-5/8 x 12	118	PEI11HBY20UF
22" x 22" x 6"	100	DR 11	47-3/8 x 40-5/8 x 12	138	
24" x 24" x 6"	100	DR 11	47-3/8 x 41-5/8 x 12	159	PEI11HBY24UF

DIPS FAB LATERAL



<u>Nominal Size</u> <u>Actual OD</u>	<u>Pressure</u> <u>Class (psi)</u>	<u>Feed</u> <u>Stock</u>	<u>Dimensions</u> <u>L x C x J (in)</u>	<u>Weight per</u> <u>Item (lbs)</u>	<u>Part #</u>
4"	100	DR 11	31 3/8 x 6x 23 5/8	10	PED11HBYPF
4.800"	126	DR 9		12	PED9HBYPF
6"	100	DR 11	36 1/4 x 8x 26	25	PED11HBYUF
6.900"	126	DR 9		30	PED9HBYUF
8"	100	DR 11	41 1/4 x 8 x 30 5/8	48	PED11HBYXF
9.050"	126	DR 9		58	PED9HBYXF
10"	63	DR 17	44 x 8 x 33	58	
11.100"	100	DR 11		87	PED11HBY10F
	126	DR 11		103	PED9HBY10F
12"	63	DR 17	49 3/4 x 10 x 36 3/4	88	PED17HBY12F
13.200"	100	DR 11		130	PED11HBY12F
	126	DR 9		150	PED9HBY12F
14"	63	DR 17	70 x 10 1/2 x 55 7/8	133	
15.300"	100	DR 11		198	PED11HBY14F
16"	63	DR 17	71 x 10 1/2 x 56 5/8	190	PED17HBY16F
17.400"	100	DR 11		283	
18"	63	DR 17	78 x 12 x 61 1/2	252	
19.500"	100	DR 11		376	PED11HBY18F
20"	63	DR 17	80 x 12 x 63 1/8	380	
21.600"	100	DR 11		566	PED11HBY20F
24"	63	DR 17	82 x 12 x 63 1/8	590	
25.800"	100	DR 11		878	PED11HBY24F



WOLSELEY
INDUSTRIAL GROUP

Trust Earned Through Performance

HDPE.COM | WOLSELEYIND.COM

Lakeland, FL
(863) 667-1686

La Porte, TX
(713) 491-1970

Washington, NC
(252) 946-8071

Washougal, WA
(360) 835-2129